



Land Donations



*Donations are the cornerstone on which
the Champaign Park District was built.*

**With over 300 acres of land donated since 1854,
the generosity of our community can be seen
in nearly every area of Champaign.**



West Side Park

Donated By
James P. White
Jeffrey A. Farnam
Nathan M. Clark

West Side Park 1973



This map application was prepared with geographic information system (GIS) data created by the Champaign County GIS Consortium (CCGIS), or other CCGIS member agency. These entities do not warrant or guarantee the accuracy or suitability of GIS data for any purpose. The GIS data within this application is intended to be used as a general index to spatial information and not intended for detailed, site-specific analysis or resolution of legal matters. Users assume all risk arising from the use or misuse of this application and information contained herein. The use of this application constitutes acknowledgement of this disclaimer.

West Side Park-2014



This map application was prepared with geographic information system (GIS) data created by the Champaign County GIS Consortium (CCGIS), or other CCGIS member agency. These entities do not warrant or guarantee the accuracy or suitability of GIS data for any purpose. The GIS data within this application is intended to be used as a general index to spatial information and not intended for detailed, site-specific analysis or resolution of legal matters. Users assume all risk arising from the use or misuse of this application and information contained herein. The use of this application constitutes acknowledgement of this disclaimer.



Beardsley Park

Donated By

George F. Beardsley

Harry P. Shivers

Beardsley Park 1973



This map application was prepared with geographic information system (GIS) data created by the Champaign County GIS Consortium (CCGIS), or other CCGISC member agency. These entities do not warrant or guarantee the accuracy or suitability of GIS data for any purpose. The GIS data within this application is intended to be used as a general index to spatial information and not intended for detailed, site-specific analysis or resolution of legal matters. Users assume all risk arising from the use or misuse of this application and information contained herein. The use of this application constitutes acknowledgement of this disclaimer.

Beardsley Park-2014



This map application was prepared with geographic information system (GIS) data created by the Champaign County GIS Consortium (CCGIS), or other CCGISC member agency. These entities do not warrant or guarantee the accuracy or suitability of GIS data for any purpose. The GIS data within this application is intended to be used as a general index to spatial information and not intended for detailed, site-specific analysis or resolution of legal matters. Users assume all risk arising from the use or misuse of this application and information contained herein. The use of this application constitutes acknowledgement of this disclaimer.



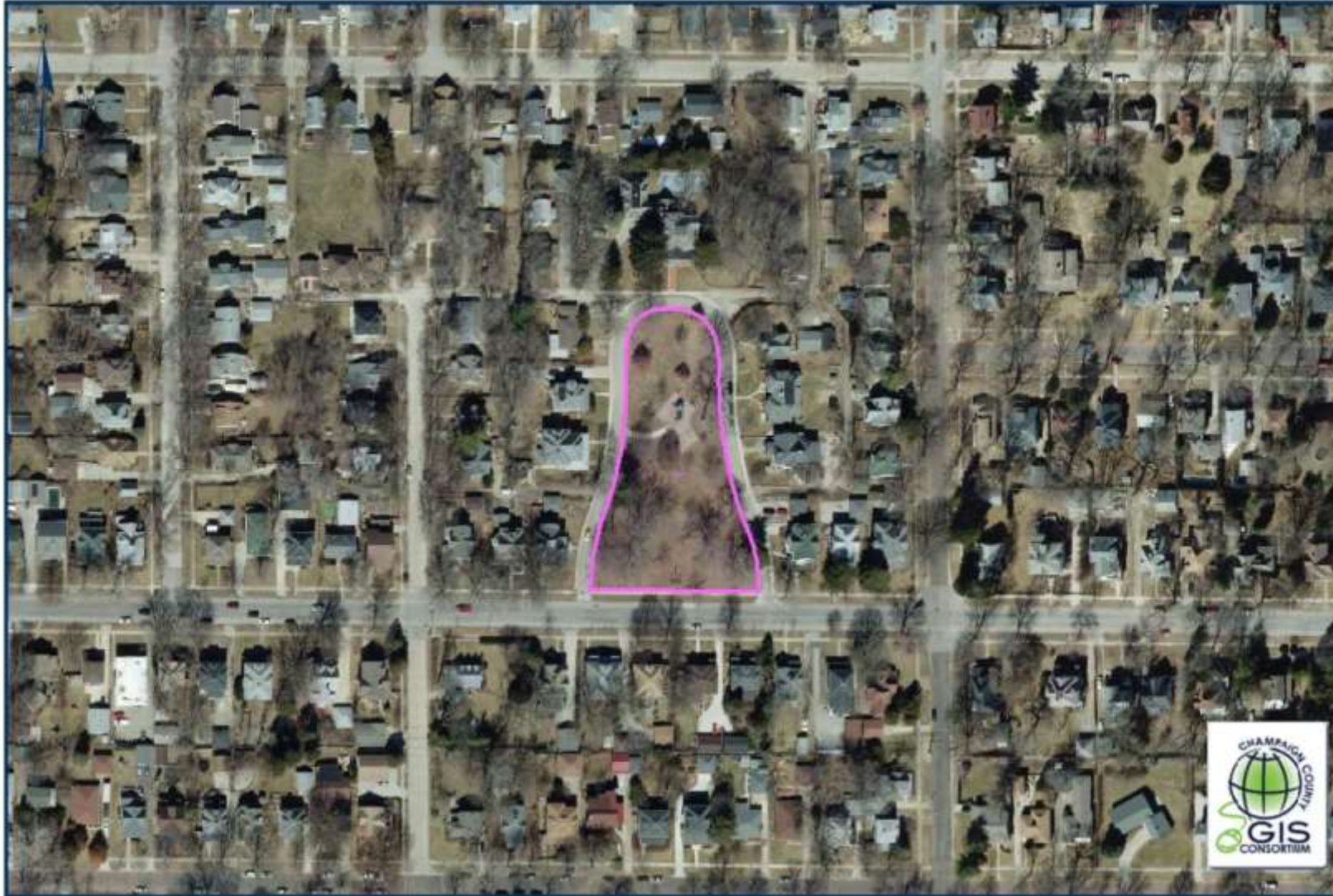
Donated By
James W. Davidson
Charles H. Baddeley
Frederick L. Cushing
Florence Morrow
John W. Stipes

Davidson Park 1973



This map application was prepared with geographic information system (GIS) data created by the Champaign County GIS Consortium (CCGIS), or other CCGIS member agency. These entities do not warrant or guarantee the accuracy or suitability of GIS data for any purpose. The GIS data within this application is intended to be used as a general index to spatial information and not intended for detailed, site-specific analysis or resolution of legal matters. Users assume all risk arising from the use or misuse of this application and information contained herein. The use of this application constitutes acknowledgement of this disclaimer.

Davidson Park-2014



This map application was prepared with geographic information system (GIS) data created by the Champaign County GIS Consortium (CCGIS), or other CCGIS member agency. These entities do not warrant or guarantee the accuracy or suitability of GIS data for any purpose. The GIS data within this application is intended to be used as a general index to spatial information and not intended for detailed, site-specific analysis or resolution of legal matters. Users assume all risk arising from the use or misuse of this application and information contained herein. The use of this application constitutes acknowledgement of this disclaimer.



Scott Park

**Donated By
James R. & Lou Emma Scott
Thomas G. Wood**

Scott Park 1973



This map application was prepared with geographic information system (GIS) data created by the Champaign County GIS Consortium (COGISC), or other COGISC member agency. These entities do not warrant or guarantee the accuracy or suitability of GIS data for any purpose. The GIS data within this application is intended to be used as a general index to spatial information and not intended for detailed, site-specific analysis or resolution of legal matters. Users assume all risk arising from the use or misuse of this application and information contained herein. The use of this application constitutes acknowledgement of this disclaimer.

Scott Park-2014



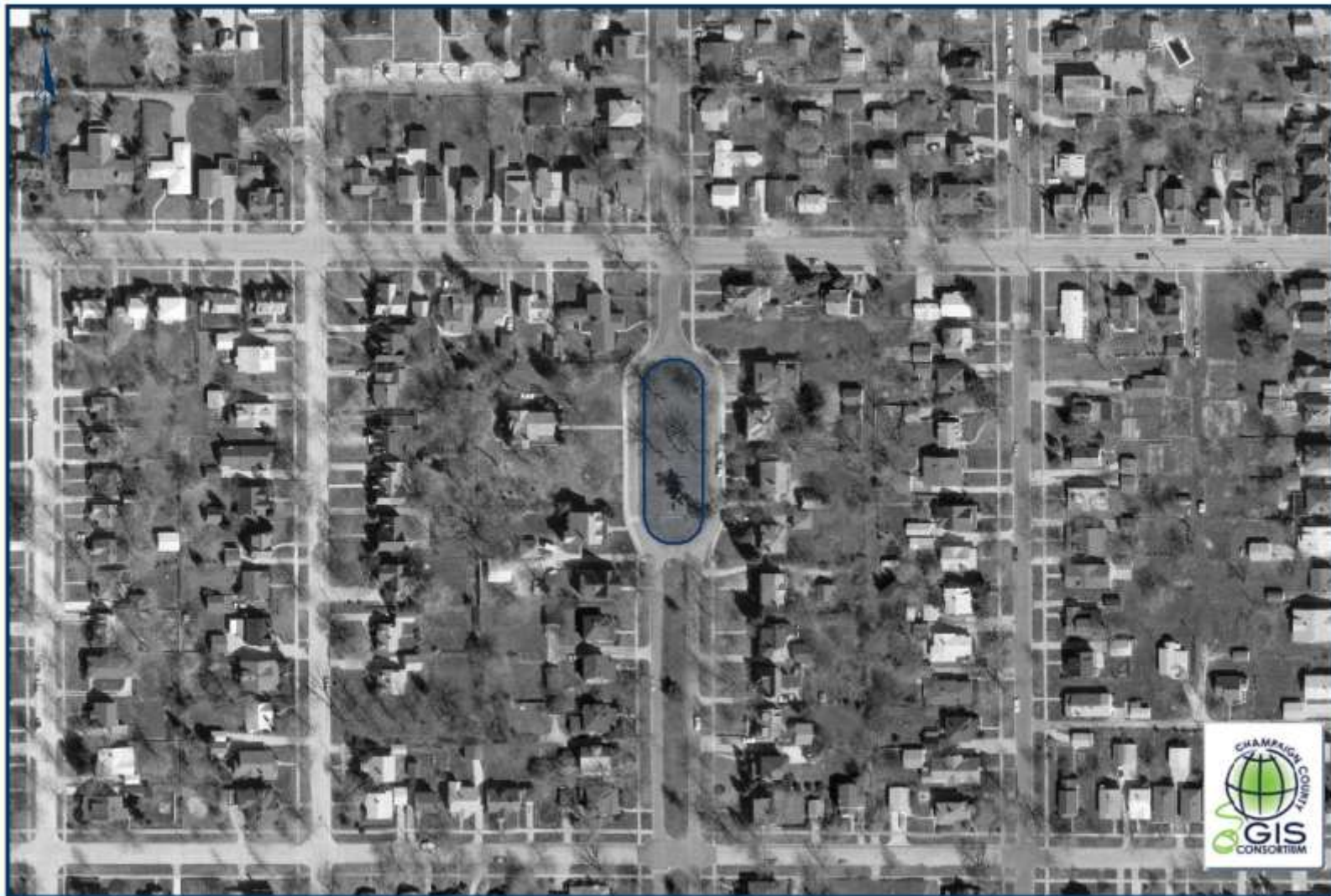
This map application was prepared with geographic information system (GIS) data created by the Champaign County GIS Consortium (CCGIS), or other CCGIS member agency. These entities do not warrant or guarantee the accuracy or suitability of GIS data for any purpose. The GIS data within this application is intended to be used as a general index to spatial information and not intended for detailed, site-specific analysis or resolution of legal matters. Users assume all risk arising from the use or misuse of this application and information contained herein. The use of this application constitutes acknowledgement of this disclaimer.



HARRIS PARK
CHAMPAIGN PARK DISTRICT

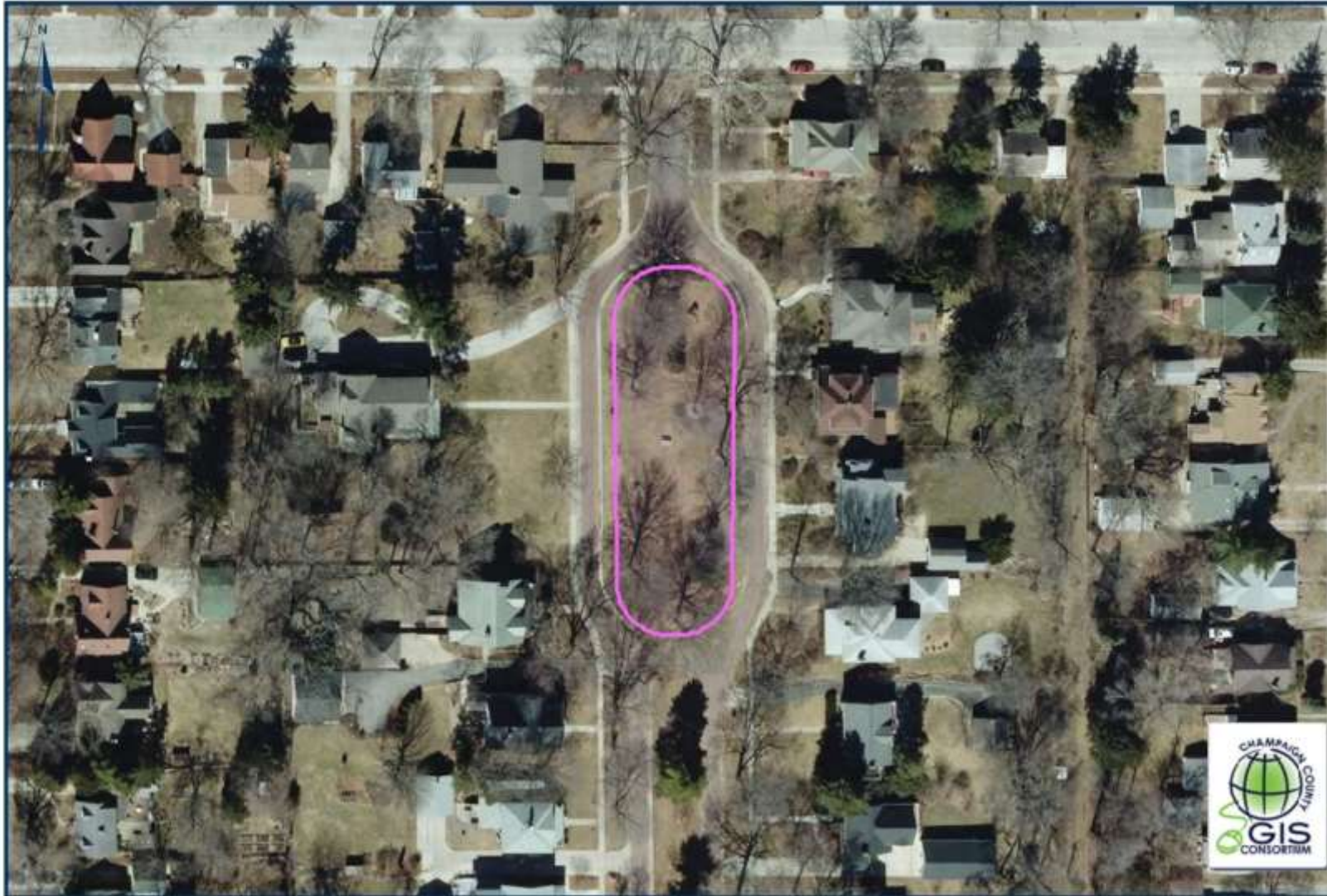
Donated By
Henry P. & Janet Harris
Elmer S. Stevenson

Harris Park 1973



This map application was prepared with geographic information system (GIS) data created by the Champaign County GIS Consortium (CCGIS), or other CCGIS member agency. These entities do not warrant or guarantee the accuracy or suitability of GIS data for any purpose. The GIS data within this application is intended to be used as a general index to spatial information and not intended for detailed, site-specific analysis or resolution of legal matters. Users assume all risk arising from the use or misuse of this application and information contained herein. The use of this application constitutes acknowledgement of this disclaimer.

Harris Park-2014



This map application was prepared with geographic information system (GIS) data created by the Champaign County GIS Consortium (CCGIS), or other CCGIS member agency. These entities do not warrant or guarantee the accuracy or suitability of GIS data for any purpose. The GIS data within this application is intended to be used as a general index to spatial information and not intended for detailed, site-specific analysis or resolution of legal matters. Users assume all risk arising from the use or misuse of this application and information contained herein. The use of this application constitutes acknowledgement of this disclaimer.



Washington Park

Donated By
George W. Davidson

Washington Park 1973



This map application was prepared with geographic information system (GIS) data created by the Champaign County GIS Consortium (CCGIS), or other CCGIS member agency. These entities do not warrant or guarantee the accuracy or suitability of GIS data for any purpose. The GIS data within this application is intended to be used as a general index to spatial information and not intended for detailed, site-specific analysis or resolution of legal matters. Users assume all risk arising from the use or misuse of this application and information contained herein. The use of this application constitutes acknowledgement of this disclaimer.

Washington Park-2014



This map application was prepared with geographic information system (GIS) data created by the Champaign County GIS Consortium (CCGIS), or other CCGIS member agency. These entities do not warrant or guarantee the accuracy or suitability of GIS data for any purpose. The GIS data within this application is intended to be used as a general index to spatial information and not intended for detailed, site-specific analysis or resolution of legal matters. Users assume all risk arising from the use or misuse of this application and information contained herein. The use of this application constitutes acknowledgement of this disclaimer.

Clark Park



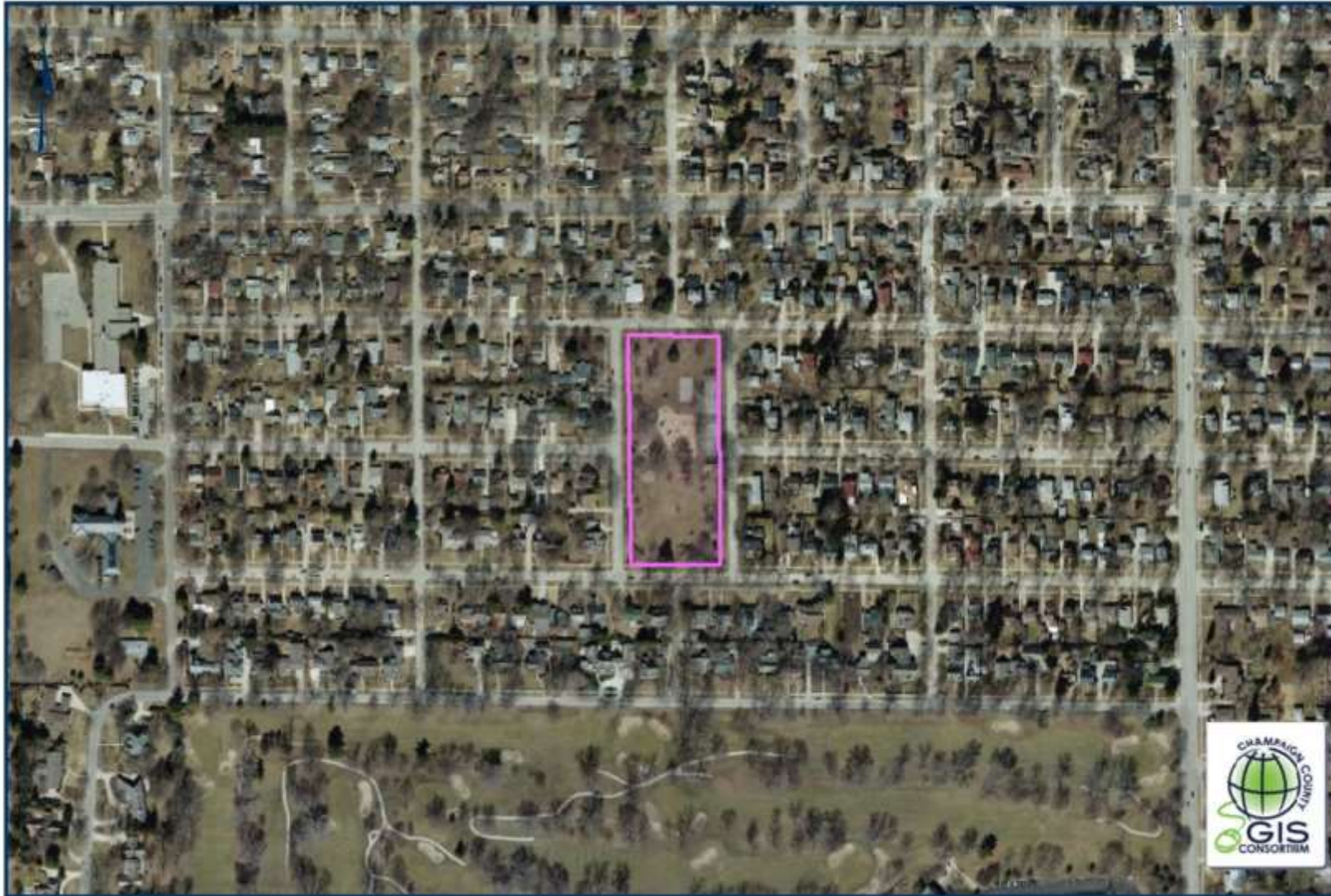
**Donated By
John S. Clark
Samuel P. Atkinson**

Clark Park 1973



This map application was prepared with geographic information system (GIS) data created by the Champaign County GIS Consortium (COGISC), or other COGISC member agency. These entities do not warrant or guarantee the accuracy or suitability of GIS data for any purpose. The GIS data within this application is intended to be used as a general index to spatial information and not intended for detailed, site-specific analysis or resolution of legal matters. Users assume all risk arising from the use or misuse of this application and information contained herein. The use of this application constitutes acknowledgement of this disclaimer.

Clark Park-2014



This map application was prepared with geographic information system (GIS) data created by the Champaign County GIS Consortium (CCGIS), or other CCGIS member agency. These entities do not warrant or guarantee the accuracy or suitability of GIS data for any purpose. The GIS data within this application is intended to be used as a general index to spatial information and not intended for detailed, site-specific analysis or resolution of legal matters. Users assume all risk arising from the use or misuse of this application and information contained herein. The use of this application constitutes acknowledgement of this disclaimer.

Hessel Park

Donated By
J. Fred Hessel



Hessel Park 1973



This map application was prepared with geographic information system (GIS) data created by the Champaign County GIS Consortium (CCGIS), or other CCGIS member agency. These entities do not warrant or guarantee the accuracy or suitability of GIS data for any purpose. The GIS data within this application is intended to be used as a general index to spatial information and not intended for detailed, site-specific analysis or resolution of legal matters. Users assume all risk arising from the use or misuse of this application and information contained herein. The use of this application constitutes acknowledgement of this disclaimer.

Hessel Park-2014



This map application was prepared with geographic information system (GIS) data created by the Champaign County GIS Consortium (CCGIS), or other CCGIS member agency. These entities do not warrant or guarantee the accuracy or suitability of GIS data for any purpose. The GIS data within this application is intended to be used as a general index to spatial information and not intended for detailed, site-specific analysis or resolution of legal matters. Users assume all risk arising from the use or misuse of this application and information contained herein. The use of this application constitutes acknowledgement of this disclaimer.

Donated By
Mr. & Mrs. Louis G. Collision



Glenn Park 1973

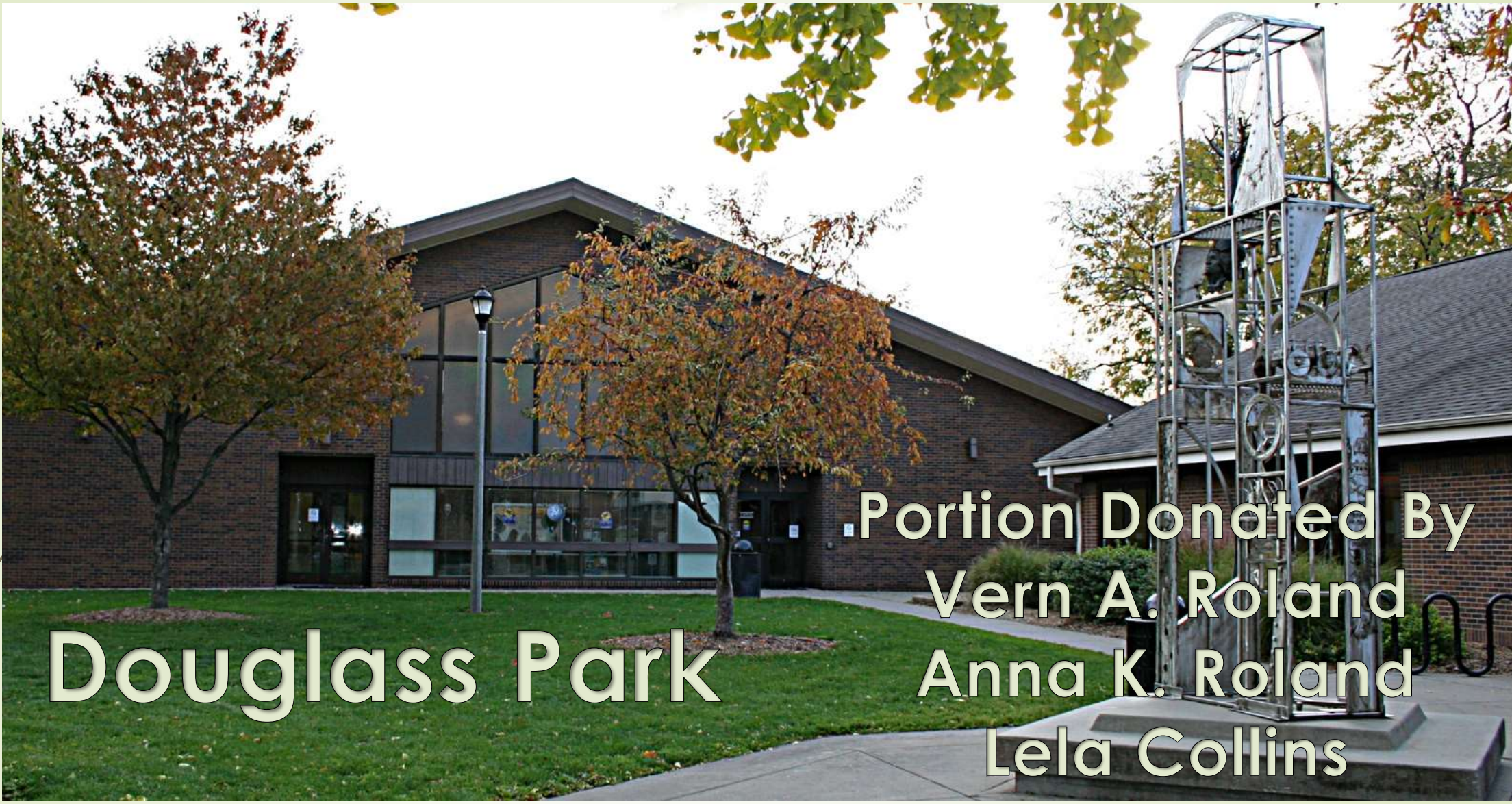


This map application was prepared with geographic information system (GIS) data created by the Champaign County GIS Consortium (CCGIS), or other CCGIS member agency. These entities do not warrant or guarantee the accuracy or suitability of GIS data for any purpose. The GIS data within this application is intended to be used as a general index to spatial information and not intended for detailed, site-specific analysis or resolution of legal matters. Users assume all risk arising from the use or misuse of this application and information contained herein. The use of this application constitutes acknowledgement of this disclaimer.

Glenn Park-2014



This map application was prepared with geographic information system (GIS) data created by the Champaign County GIS Consortium (CCGIS), or other CCGIS member agency. These entities do not warrant or guarantee the accuracy or suitability of GIS data for any purpose. The GIS data within this application is intended to be used as a general index to spatial information and not intended for detailed, site-specific analysis or resolution of legal matters. Users assume all risk arising from the use or misuse of this application and information contained herein. The use of this application constitutes acknowledgement of this disclaimer.



Douglass Park

Portion Donated By
Vern A. Roland
Anna K. Roland
Lela Collins

Douglass Park 1973



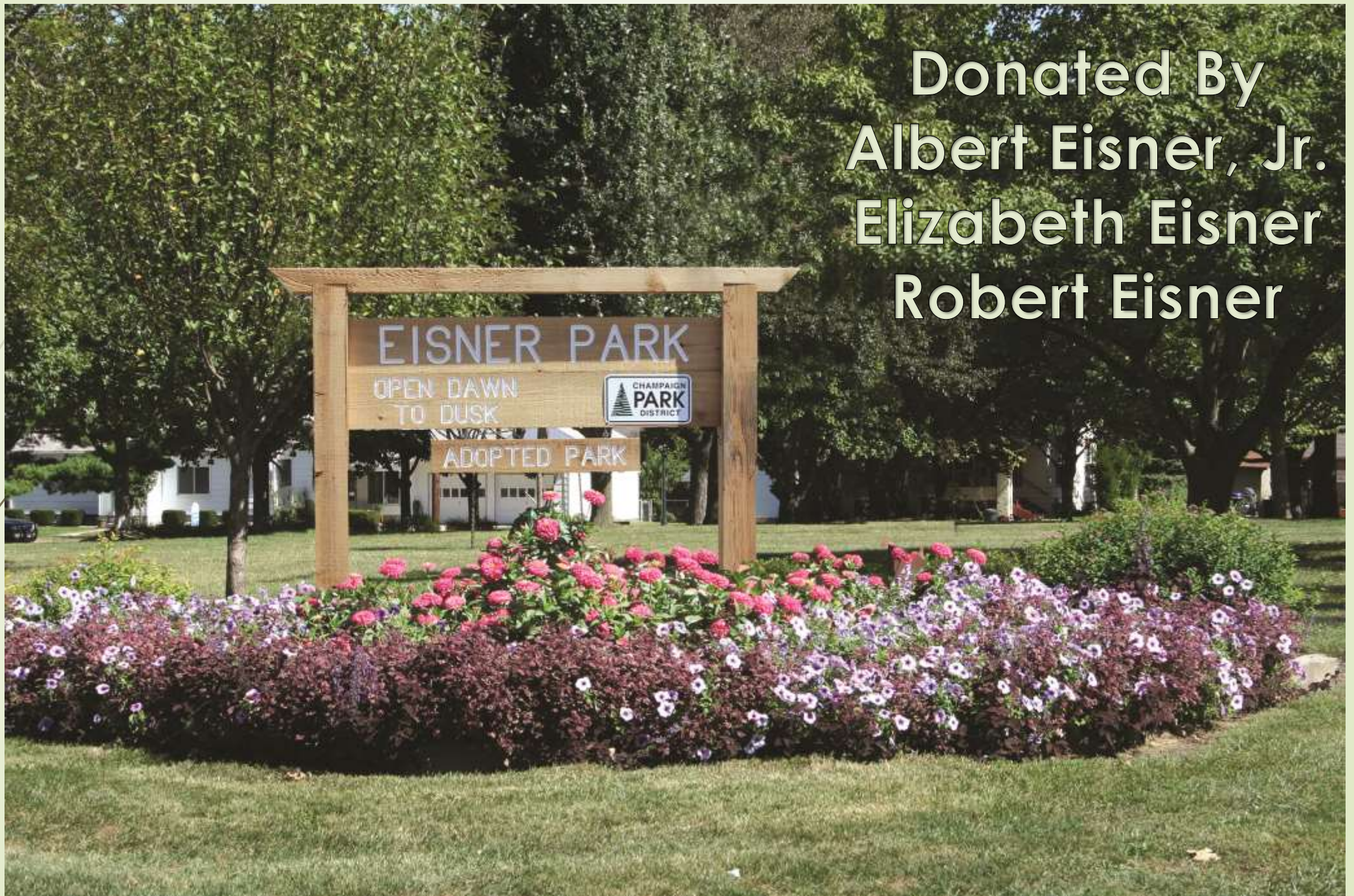
This map application was prepared with geographic information system (GIS) data created by the Champaign County GIS Consortium (CCGIS), or other CCGISC member agency. These entities do not warrant or guarantee the accuracy or suitability of GIS data for any purpose. The GIS data within this application is intended to be used as a general index to spatial information and not intended for detailed, site-specific analysis or resolution of legal matters. Users assume all risk arising from the use or misuse of this application and information contained herein. The use of this application constitutes acknowledgement of this disclaimer.

Douglass Park-2014



This map application was prepared with geographic information system (GIS) data created by the Champaign County GIS Consortium (CCGIS), or other CCGIS member agency. These entities do not warrant or guarantee the accuracy or suitability of GIS data for any purpose. The GIS data within this application is intended to be used as a general index to spatial information and not intended for detailed, site-specific analysis or resolution of legal matters. Users assume all risk arising from the use or misuse of this application and information contained herein. The use of this application constitutes acknowledgement of this disclaimer.

Donated By
Albert Eisner, Jr.
Elizabeth Eisner
Robert Eisner

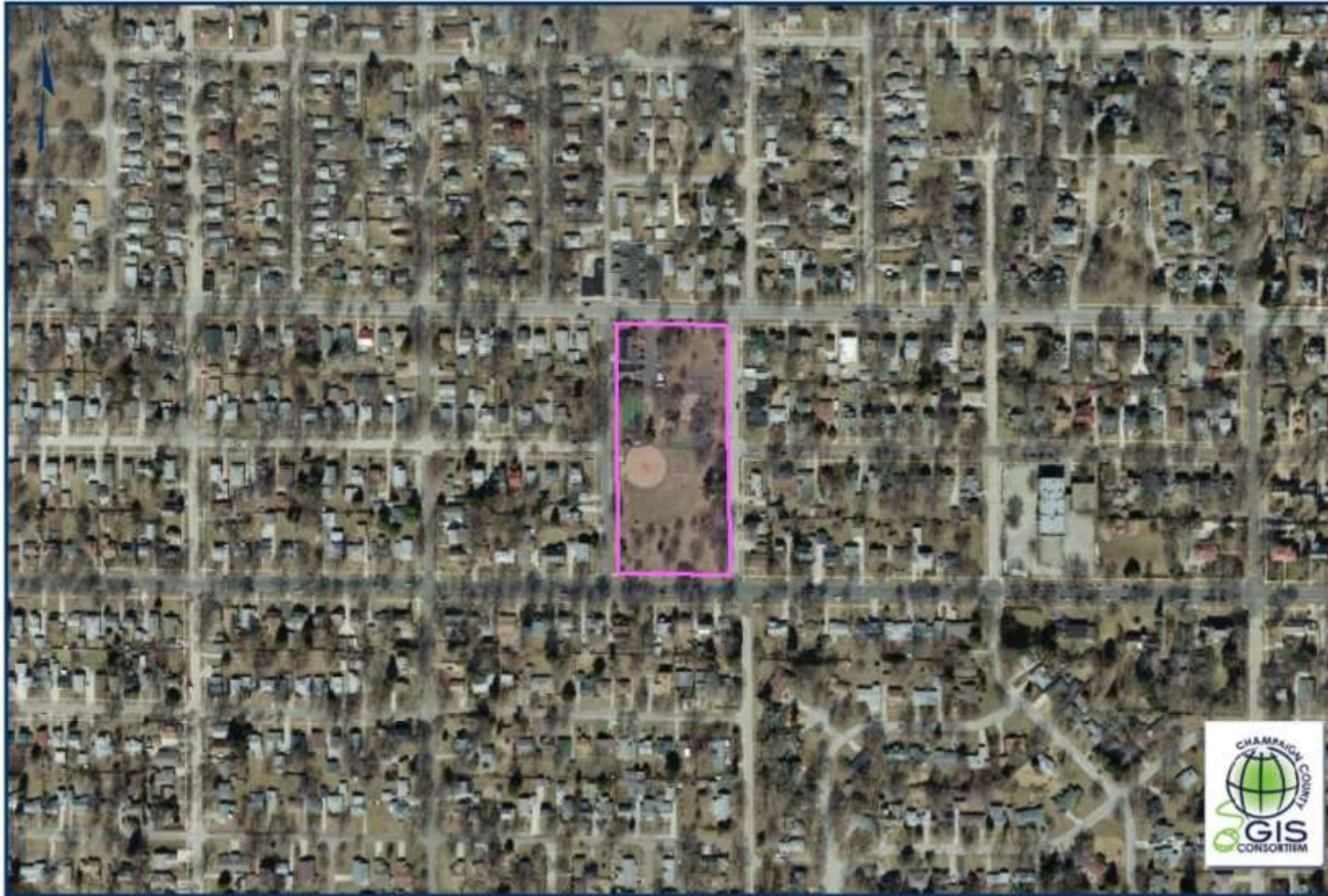


Eisner Park 1973



This map application was prepared with geographic information system (GIS) data created by the Champaign County GIS Consortium (CCGIS), or other CCGIS member agency. These entities do not warrant or guarantee the accuracy or suitability of GIS data for any purpose. The GIS data within this application is intended to be used as a general index to spatial information and not intended for detailed, site-specific analysis or resolution of legal matters. Users assume all risk arising from the use or misuse of this application and information contained herein. The use of this application constitutes acknowledgement of this disclaimer.

Eisner Park-2014



This map application was prepared with geographic information system (GIS) data created by the Champaign County GIS Consortium (CCGIS), or other CCGISC member agency. These entities do not warrant or guarantee the accuracy or suitability of GIS data for any purpose. The GIS data within this application is intended to be used as a general index to spatial information and not intended for detailed, site-specific analysis or resolution of legal matters. Users assume all risk arising from the use or misuse of this application and information contained herein. The use of this application constitutes acknowledgement of this disclaimer.



Garden Hills Park

Donated By
Cecil A. Ozier

Garden Hills Park 1973



This map application was prepared with geographic information system (GIS) data created by the Champaign County GIS Consortium (CCGIS), or other CCGISC member agency. These entities do not warrant or guarantee the accuracy or suitability of GIS data for any purpose. The GIS data within this application is intended to be used as a general index to spatial information and not intended for detailed, site-specific analysis or resolution of legal matters. Users assume all risk arising from the use or misuse of this application and information contained herein. The use of this application constitutes acknowledgement of this disclaimer.

Garden Hills Park-2014



This map application was prepared with geographic information system (GIS) data created by the Champaign County GIS Consortium (CCGIS), or other CCGISC member agency. These entities do not warrant or guarantee the accuracy or suitability of GIS data for any purpose. The GIS data within this application is intended to be used as a general index to spatial information and not intended for detailed, site-specific analysis or resolution of legal matters. Users assume all risk arising from the use or misuse of this application and information contained herein. The use of this application constitutes acknowledgement of this disclaimer.

A photograph of a park with a winding path, trees, and a house in the background. The path is paved and curves through a grassy area with many trees. In the background, a house is visible through the trees. The sky is blue with some clouds. The overall scene is bright and sunny.

Thompson Park

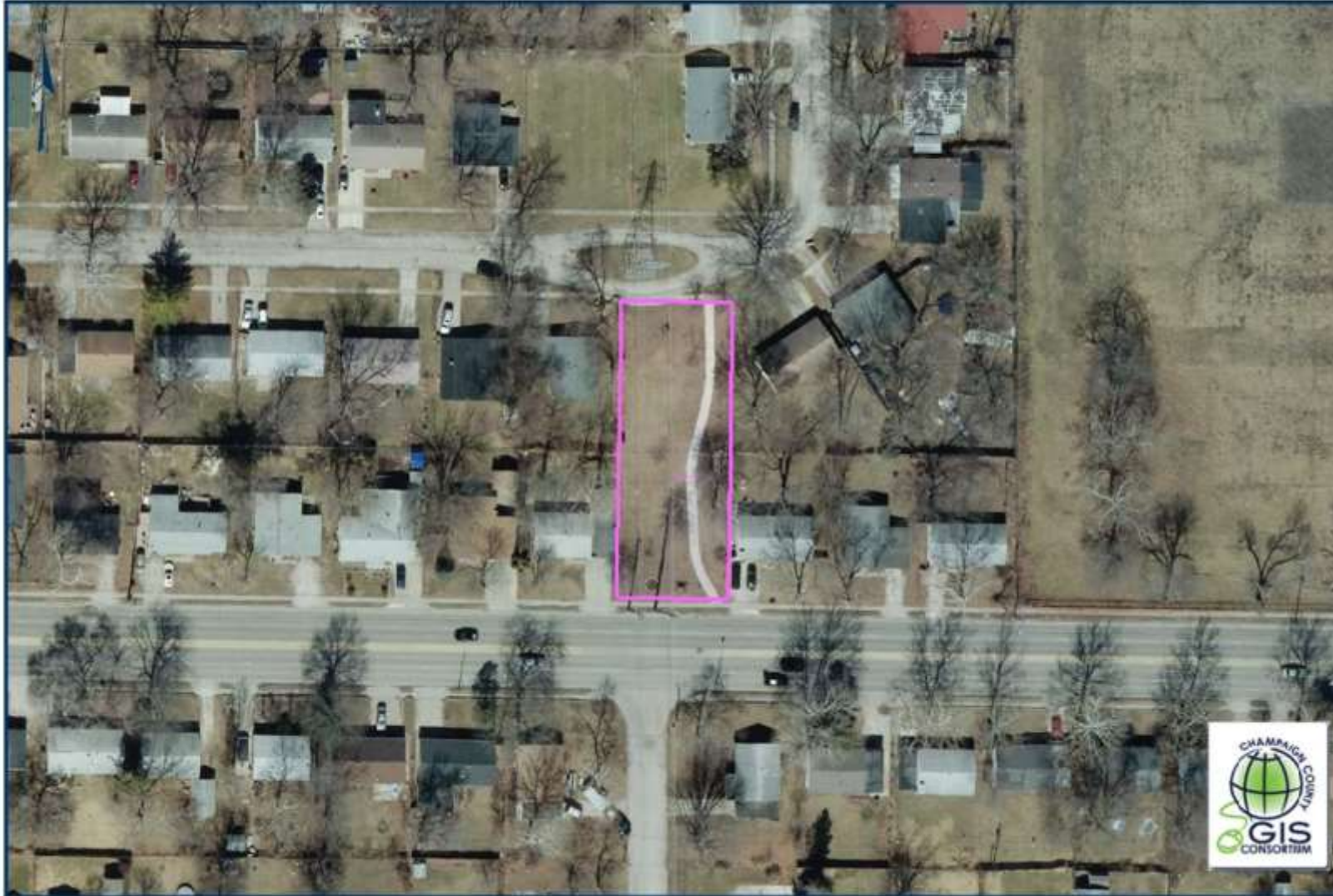
Donated By
Clarence Thompson

Thompson Park 1973



This map application was prepared with geographic information system (GIS) data created by the Champaign County GIS Consortium (CCGIS), or other CCGIS member agency. These entities do not warrant or guarantee the accuracy or suitability of GIS data for any purpose. The GIS data within this application is intended to be used as a general index to spatial information and not intended for detailed, site-specific analysis or resolution of legal matters. Users assume all risk arising from the use or misuse of this application and information contained herein. The use of this application constitutes acknowledgement of this disclaimer.

Thompson Park-2014



This map application was prepared with geographic information system (GIS) data created by the Champaign County GIS Consortium (CCGIS), or other CCGIS member agency. These entities do not warrant or guarantee the accuracy or suitability of GIS data for any purpose. The GIS data within this application is intended to be used as a general index to spatial information and not intended for detailed, site-specific analysis or resolution of legal matters. Users assume all risk arising from the use or misuse of this application and information contained herein. The use of this application constitutes acknowledgement of this disclaimer.



Morrissey Park

Portion Donated By
Melissa M. and
Dorrell S. Noel

Morrissey Park 1973

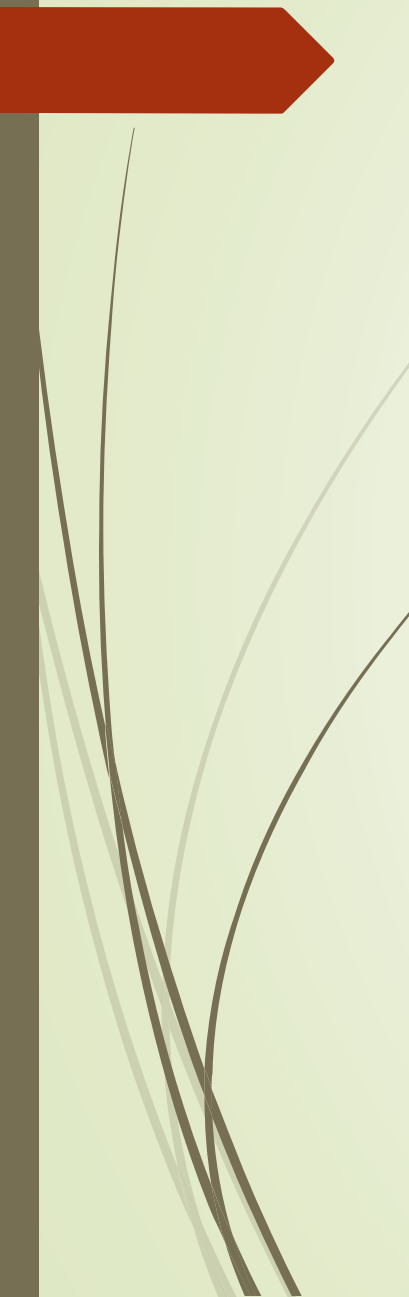


This map application was prepared with geographic information system (GIS) data created by the Champaign County GIS Consortium (CCGIS), or other CCGIS member agency. These entities do not warrant or guarantee the accuracy or suitability of GIS data for any purpose. The GIS data within this application is intended to be used as a general index to spatial information and not intended for detailed, site-specific analysis or resolution of legal matters. Users assume all risk arising from the use or misuse of this application and information contained herein. The use of this application constitutes acknowledgement of this disclaimer.

Morrissey Park-2014



This map application was prepared with geographic information system (GIS) data created by the Champaign County GIS Consortium (CCGIS), or other CCGISC member agency. These entities do not warrant or guarantee the accuracy or suitability of GIS data for any purpose. The GIS data within this application is intended to be used as a general index to spatial information and not intended for detailed, site-specific analysis or resolution of legal matters. Users assume all risk arising from the use or misuse of this application and information contained herein. The use of this application constitutes acknowledgement of this disclaimer.



Donated By
Mrs. T.J. Camp
Mrs. H.I. Cone
Mrs. Alan McDonald



Mattis Park

Mattis Park 1973




This map application was prepared with geographic information system (GIS) data created by the Champaign County GIS Consortium (CCGIS), or other CCGIS member agency. These entities do not warrant or guarantee the accuracy or suitability of GIS data for any purpose. The GIS data within this application is intended to be used as a general index to spatial information and not intended for detailed, site-specific analysis or resolution of legal matters. Users assume all risk arising from the use or misuse of this application and information contained herein. The use of this application constitutes acknowledgement of this disclaimer.

Mattis Park-2014



This map application was prepared with geographic information system (GIS) data created by the Champaign County GIS Consortium (CCGIS), or other CCGIS member agency. These entities do not warrant or guarantee the accuracy or suitability of GIS data for any purpose. The GIS data within this application is intended to be used as a general index to spatial information and not intended for detailed, site-specific analysis or resolution of legal matters. Users assume all risk arising from the use or misuse of this application and information contained herein. The use of this application constitutes acknowledgement of this disclaimer.



Donated By
Stanley & Josephine Kaufman
Joan Swartz

Kaufman Park

Kaufman Park 1973



This map application was prepared with geographic information system (GIS) data created by the Champaign County GIS Consortium (CCGIS), or other CCGISC member agency. These entities do not warrant or guarantee the accuracy or suitability of GIS data for any purpose. The GIS data within this application is intended to be used as a general index to spatial information and not intended for detailed, site-specific analysis or resolution of legal matters. Users assume all risk arising from the use or misuse of this application and information contained herein. The use of this application constitutes acknowledgement of this disclaimer.

Kaufman Park-2014



This map application was prepared with geographic information system (GIS) data created by the Champaign County GIS Consortium (CCGIS), or other CCGIS member agency. These entities do not warrant or guarantee the accuracy or suitability of GIS data for any purpose. The GIS data within this application is intended to be used as a general index to spatial information and not intended for detailed, site-specific analysis or resolution of legal matters. Users assume all risk arising from the use or misuse of this application and information contained herein. The use of this application constitutes acknowledgement of this disclaimer.



Robeson Park

Donated By
Kyle Robeson
Frank K. Robeson

Robeson Park 1973



This map application was prepared with geographic information system (GIS) data created by the Champaign County GIS Consortium (COGISC), or other CCGISC member agency. These entities do not warrant or guarantee the accuracy or suitability of GIS data for any purpose. The GIS data within this application is intended to be used as a general index to spatial information and not intended for detailed, site-specific analysis or resolution of legal matters. Users assume all risk arising from the use or misuse of this application and information contained herein. The use of this application constitutes acknowledgement of this disclaimer.

Robeson Park-2014



This map application was prepared with geographic information system (GIS) data created by the Champaign County GIS Consortium (CCGIS), or other CCGIS member agency. These entities do not warrant or guarantee the accuracy or suitability of GIS data for any purpose. The GIS data within this application is intended to be used as a general index to spatial information and not intended for detailed, site-specific analysis or resolution of legal matters. Users assume all risk arising from the use or misuse of this application and information contained herein. The use of this application constitutes acknowledgement of this disclaimer.



Heritage Park

Donated By

Mattis Trust

Ross Camp

Elsie & Bill Springer

First Federal of Peoria



Heritage Park 1973



This map application was prepared with geographic information system (GIS) data created by the Champaign County GIS Consortium (CCGIS), or other CCGISC member agency. These entities do not warrant or guarantee the accuracy or suitability of GIS data for any purpose. The GIS data within this application is intended to be used as a general index to spatial information and not intended for detailed, site-specific analysis or resolution of legal matters. Users assume all risk arising from the use or misuse of this application and information contained herein. The use of this application constitutes acknowledgement of this disclaimer.

Heritage Park-2014



This map application was prepared with geographic information system (GIS) data created by the Champaign County GIS Consortium (CCGIS), or other CCGIS member agency. These entities do not warrant or guarantee the accuracy or suitability of GIS data for any purpose. The GIS data within this application is intended to be used as a general index to spatial information and not intended for detailed, site-specific analysis or resolution of legal matters. Users assume all risk arising from the use or misuse of this application and information contained herein. The use of this application constitutes acknowledgement of this disclaimer.



Donated By
Harlan E. Moore

Harlan E. Moore Park-1973



This map application was prepared with geographic information system (GIS) data created by the Champaign County GIS Consortium (CCGIS), or other CCGIS member agency. These entities do not warrant or guarantee the accuracy or suitability of GIS data for any purpose. The GIS data within this application is intended to be used as a general index to spatial information and not intended for detailed, site-specific analysis or resolution of legal matters. Users assume all risk arising from the use or misuse of this application and information contained herein. The use of this application constitutes acknowledgement of this disclaimer.

Harlan E. Moore Park-2014



This map application was prepared with geographic information system (GIS) data created by the Champaign County GIS Consortium (CCGIS), or other CCGIS member agency. These entities do not warrant or guarantee the accuracy or suitability of GIS data for any purpose. The GIS data within this application is intended to be used as a general index to spatial information and not intended for detailed, site-specific analysis or resolution of legal matters. Users assume all risk arising from the use or misuse of this application and information contained herein. The use of this application constitutes acknowledgement of this disclaimer.



Greenbelt #1

Portion Donated By
Clarence Thompson &
Greenbelt Neighbors

Greenbelt #1 1973




This map application was prepared with geographic information system (GIS) data created by the Champaign County GIS Consortium (COGISC), or other CCGISC member agency. These entities do not warrant or guarantee the accuracy or suitability of GIS data for any purpose. The GIS data within this application is intended to be used as a general index to spatial information and not intended for detailed, site-specific analysis or resolution of legal matters. Users assume all risk arising from the use or misuse of this application and information contained herein. The use of this application constitutes acknowledgement of this disclaimer.

Greenbelt #1-2014



This map application was prepared with geographic information system (GIS) data created by the Champaign County GIS Consortium (CCGIS), or other CCGISC member agency. These entities do not warrant or guarantee the accuracy or suitability of GIS data for any purpose. The GIS data within this application is intended to be used as a general index to spatial information and not intended for detailed, site-specific analysis or resolution of legal matters. Users assume all risk arising from the use or misuse of this application and information contained herein. The use of this application constitutes acknowledgement of this disclaimer.

A wide-angle photograph of a large, well-maintained green lawn. In the background, there is a row of trees and several houses, including a prominent yellow house. The sky is clear and blue. The image is framed by a light green border on the left and right sides. On the left side, there is a red arrow pointing right and some abstract line art.

Portion Donated By
Leo Bian

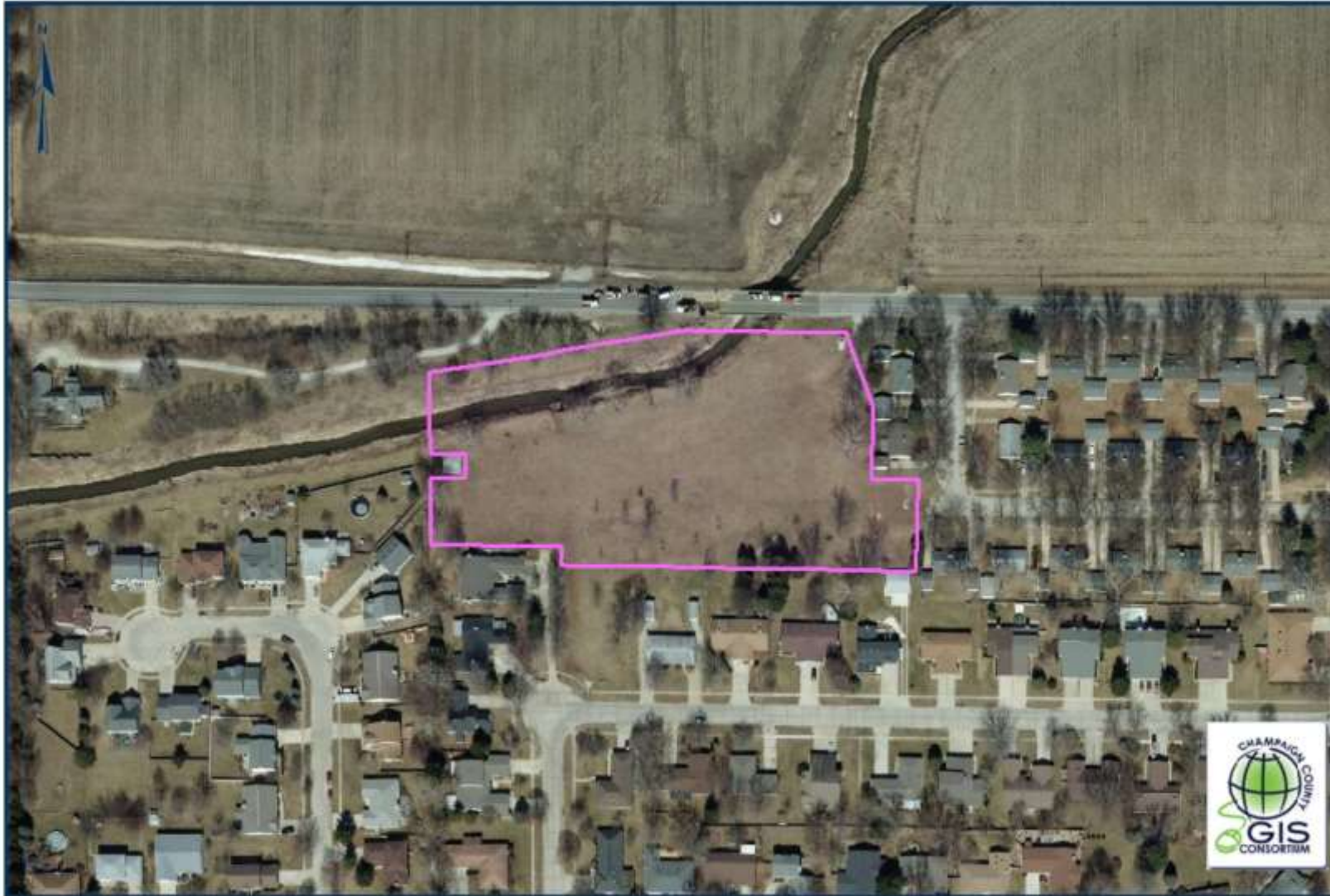
Bian Park

Bian Park 1973



This map application was prepared with geographic information system (GIS) data created by the Champaign County GIS Consortium (CCGIS), or other CCGIS member agency. These entities do not warrant or guarantee the accuracy or suitability of GIS data for any purpose. The GIS data within this application is intended to be used as a general index to spatial information and not intended for detailed, site-specific analysis or resolution of legal matters. Users assume all risk arising from the use or misuse of this application and information contained herein. The use of this application constitutes acknowledgement of this disclaimer.

Bian Park-2014



This map application was prepared with geographic information system (GIS) data created by the Champaign County GIS Consortium (CCGIS), or other CCGIS member agency. These entities do not warrant or guarantee the accuracy or suitability of GIS data for any purpose. The GIS data within this application is intended to be used as a general index to spatial information and not intended for detailed, site-specific analysis or resolution of legal matters. Users assume all risk arising from the use or misuse of this application and information contained herein. The use of this application constitutes acknowledgement of this disclaimer.



Donated By
Noel Family Trust

Noel Park 1973



This map application was prepared with geographic information system (GIS) data created by the Champaign County GIS Consortium (CCGIS), or other CCGIS member agency. These entities do not warrant or guarantee the accuracy or suitability of GIS data for any purpose. The GIS data within this application is intended to be used as a general index to spatial information and not intended for detailed, site-specific analysis or resolution of legal matters. Users assume all risk arising from the use or misuse of this application and information contained herein. The use of this application constitutes acknowledgement of this disclaimer.

Noel Park-2014



This map application was prepared with geographic information system (GIS) data created by the Champaign County GIS Consortium (CCGIS), or other CCGIS member agency. These entities do not warrant or guarantee the accuracy or suitability of GIS data for any purpose. The GIS data within this application is intended to be used as a general index to spatial information and not intended for detailed, site-specific analysis or resolution of legal matters. Users assume all risk arising from the use or misuse of this application and information contained herein. The use of this application constitutes acknowledgement of this disclaimer.



JOHNSTON PARK

IN HONOR OF SEELY JOHNSTON
PLAYGROUND COMMISSIONER

1939-1968

OPEN 5 AM. - 11 PM.

CHAMPAIGN PARK DISTRICT

Portion Donated By
Scott Weller

Johnston Park 1973



This map application was prepared with geographic information system (GIS) data created by the Champaign County GIS Consortium (CCGIS), or other CCGIS member agency. These entities do not warrant or guarantee the accuracy or suitability of GIS data for any purpose. The GIS data within this application is intended to be used as a general index to spatial information and not intended for detailed, site-specific analysis or resolution of legal matters. Users assume all risk arising from the use or misuse of this application and information contained herein. The use of this application constitutes acknowledgement of this disclaimer.

Johnston Park-2014



This map application was prepared with geographic information system (GIS) data created by the Champaign County GIS Consortium (CCGIS), or other CCGIS member agency. These entities do not warrant or guarantee the accuracy or suitability of GIS data for any purpose. The GIS data within this application is intended to be used as a general index to spatial information and not intended for detailed, site-specific analysis or resolution of legal matters. Users assume all risk arising from the use or misuse of this application and information contained herein. The use of this application constitutes acknowledgement of this disclaimer.

Donated By
Tom Wisegarver



Wisegarver Park 1973



This map application was prepared with geographic information system (GIS) data created by the Champaign County GIS Consortium (CCGIS), or other CCGISC member agency. These entities do not warrant or guarantee the accuracy or suitability of GIS data for any purpose. The GIS data within this application is intended to be used as a general index to spatial information and not intended for detailed, site-specific analysis or resolution of legal matters. Users assume all risk arising from the use or misuse of this application and information contained herein. The use of this application constitutes acknowledgement of this disclaimer.

Wisegarver Park-2014



This map application was prepared with geographic information system (GIS) data created by the Champaign County GIS Consortium (CCGIS), or other CCGIS member agency. These entities do not warrant or guarantee the accuracy or suitability of GIS data for any purpose. The GIS data within this application is intended to be used as a general index to spatial information and not intended for detailed, site-specific analysis or resolution of legal matters. Users assume all risk arising from the use or misuse of this application and information contained herein. The use of this application constitutes acknowledgement of this disclaimer.



Trevett-Finch Park

Donated By
Alma Trevett Gerber
Linda Allen-Cler Roberson
Carol Rose

Trevett-Finch Park 1973



This map application was prepared with geographic information system (GIS) data created by the Champaign County GIS Consortium (CCGIS), or other CCGIS member agency. These entities do not warrant or guarantee the accuracy or suitability of GIS data for any purpose. The GIS data within this application is intended to be used as a general index to spatial information and not intended for detailed, site-specific analysis or resolution of legal matters. Users assume all risk arising from the use or misuse of this application and information contained herein. The use of this application constitutes acknowledgement of this disclaimer.

Trevett-Finch Park 2014

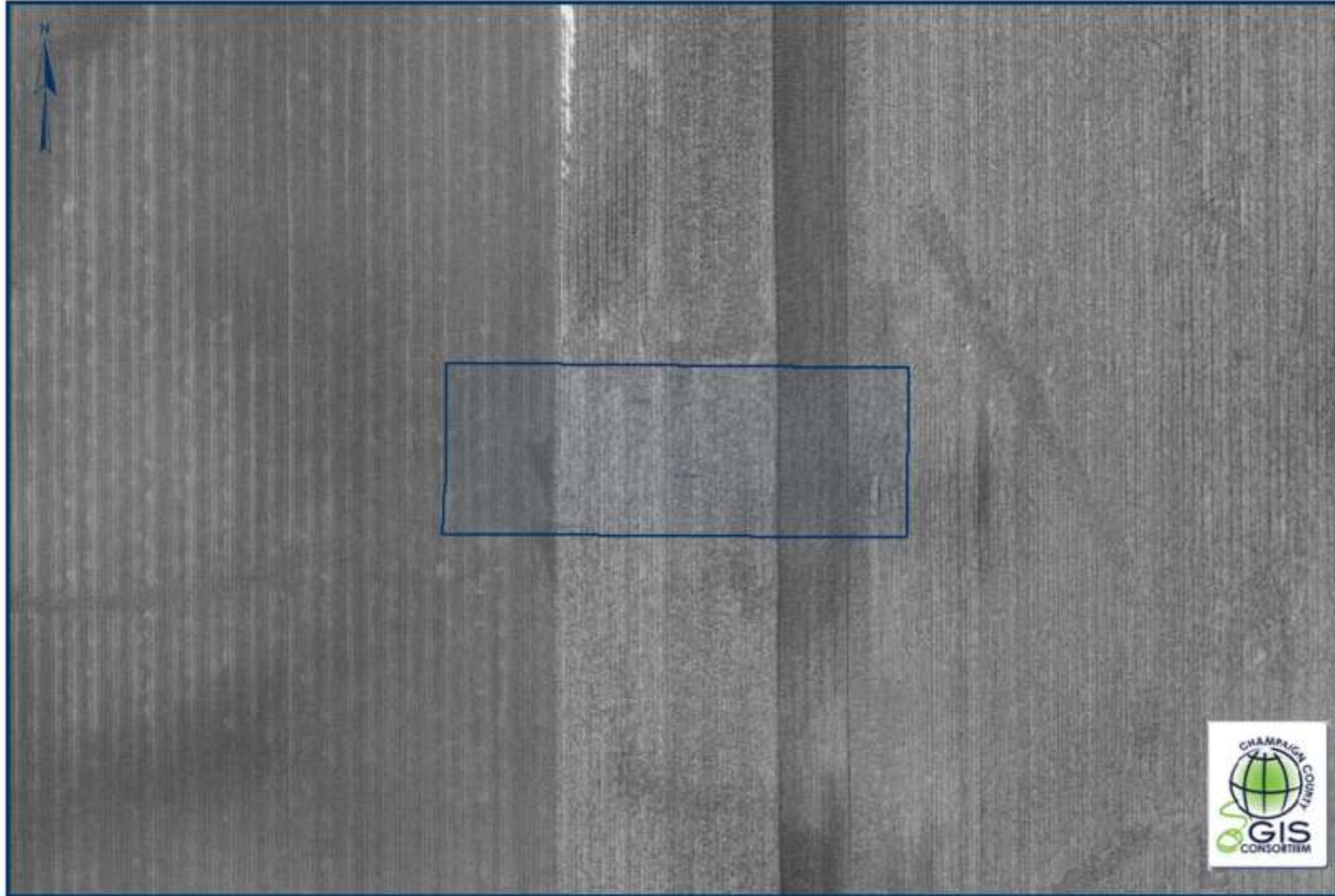


This map application was prepared with geographic information system (GIS) data created by the Champaign County GIS Consortium (CCGIS), or other CCGIS member agency. These entities do not warrant or guarantee the accuracy or suitability of GIS data for any purpose. The GIS data within this application is intended to be used as a general index to spatial information and not intended for detailed, site-specific analysis or resolution of legal matters. Users assume all risk arising from the use or misuse of this application and information contained herein. The use of this application constitutes acknowledgement of this disclaimer.



Donated By
Champion Federal & Hutcon, Ltd.

Meadows Square Park 1973



This map application was prepared with geographic information system (GIS) data created by the Champaign County GIS Consortium (CCGIS), or other CCGIS member agency. These entities do not warrant or guarantee the accuracy or suitability of GIS data for any purpose. The GIS data within this application is intended to be used as a general index to spatial information and not intended for detailed, site-specific analysis or resolution of legal matters. Users assume all risk arising from the use or misuse of this application and information contained herein. The use of this application constitutes acknowledgement of this disclaimer.

Meadows Square Park-2014



This map application was prepared with geographic information system (GIS) data created by the Champaign County GIS Consortium (CCGIS), or other CCGIS member agency. These entities do not warrant or guarantee the accuracy or suitability of GIS data for any purpose. The GIS data within this application is intended to be used as a general index to spatial information and not intended for detailed, site-specific analysis or resolution of legal matters. Users assume all risk arising from the use or misuse of this application and information contained herein. The use of this application constitutes acknowledgement of this disclaimer.



Portion Donated By
Mike Thompson
Jim O'Malley

Powell Park 1973



This map application was prepared with geographic information system (GIS) data created by the Champaign County GIS Consortium (CCGIS), or other CCGIS member agency. These entities do not warrant or guarantee the accuracy or suitability of GIS data for any purpose. The GIS data within this application is intended to be used as a general index to spatial information and not intended for detailed, site-specific analysis or resolution of legal matters. Users assume all risk arising from the use or misuse of this application and information contained herein. The use of this application constitutes acknowledgement of this disclaimer.

Powell Park-2014



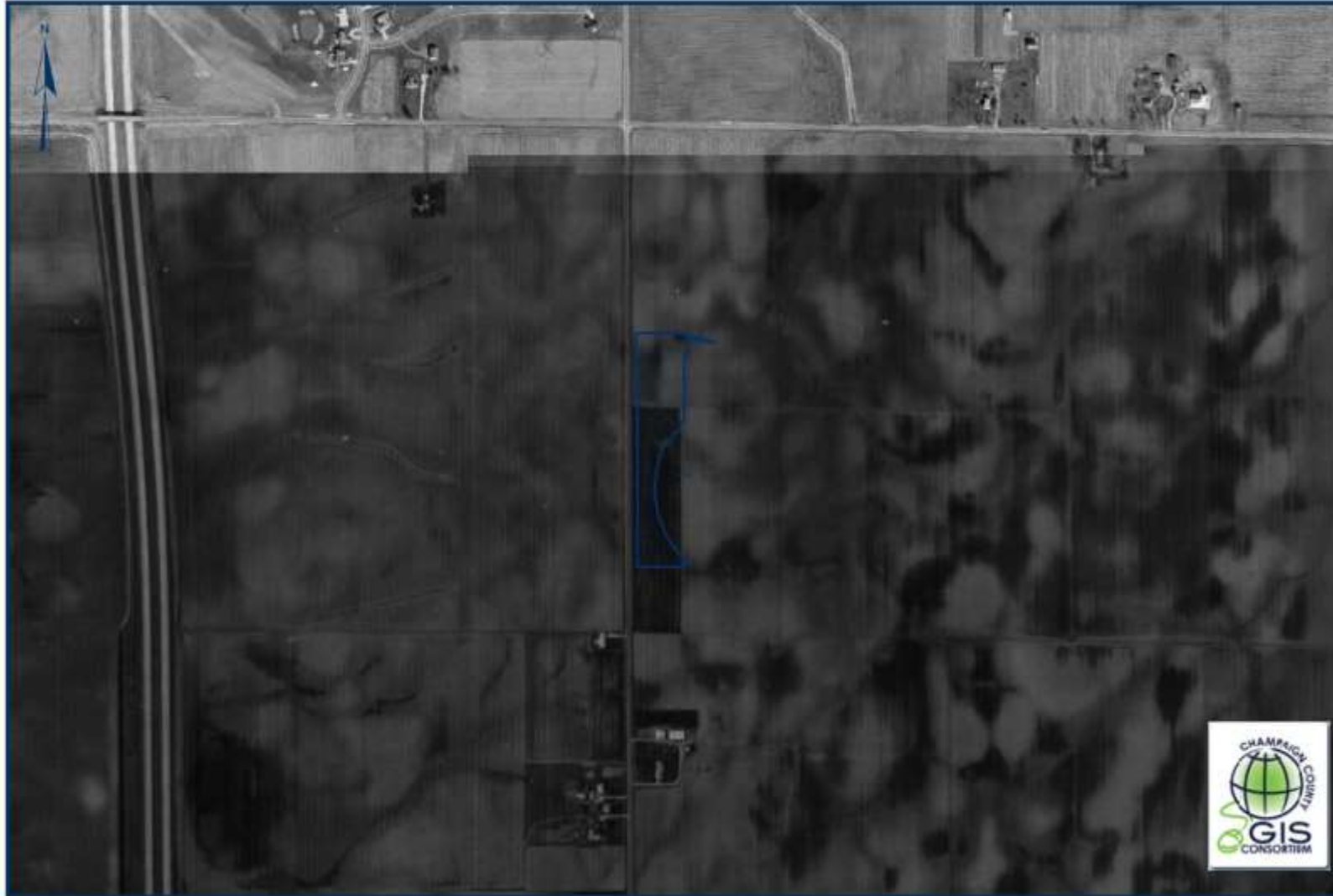
This map application was prepared with geographic information system (GIS) data created by the Champaign County GIS Consortium (CCGIS), or other CCGIS member agency. These entities do not warrant or guarantee the accuracy or suitability of GIS data for any purpose. The GIS data within this application is intended to be used as a general index to spatial information and not intended for detailed, site-specific analysis or resolution of legal matters. Users assume all risk arising from the use or misuse of this application and information contained herein. The use of this application constitutes acknowledgement of this disclaimer.



Hallbeck Park

Donated By
Josef Hallbeck

Hallbeck Park 1973



This map application was prepared with geographic information system (GIS) data created by the Champaign County GIS Consortium (CCGIS), or other CCGISC member agency. These entities do not warrant or guarantee the accuracy or suitability of GIS data for any purpose. The GIS data within this application is intended to be used as a general index to spatial information and not intended for detailed, site-specific analysis or resolution of legal matters. Users assume all risk arising from the use or misuse of this application and information contained herein. The use of this application constitutes acknowledgement of this disclaimer.

Hallbeck Park-2014



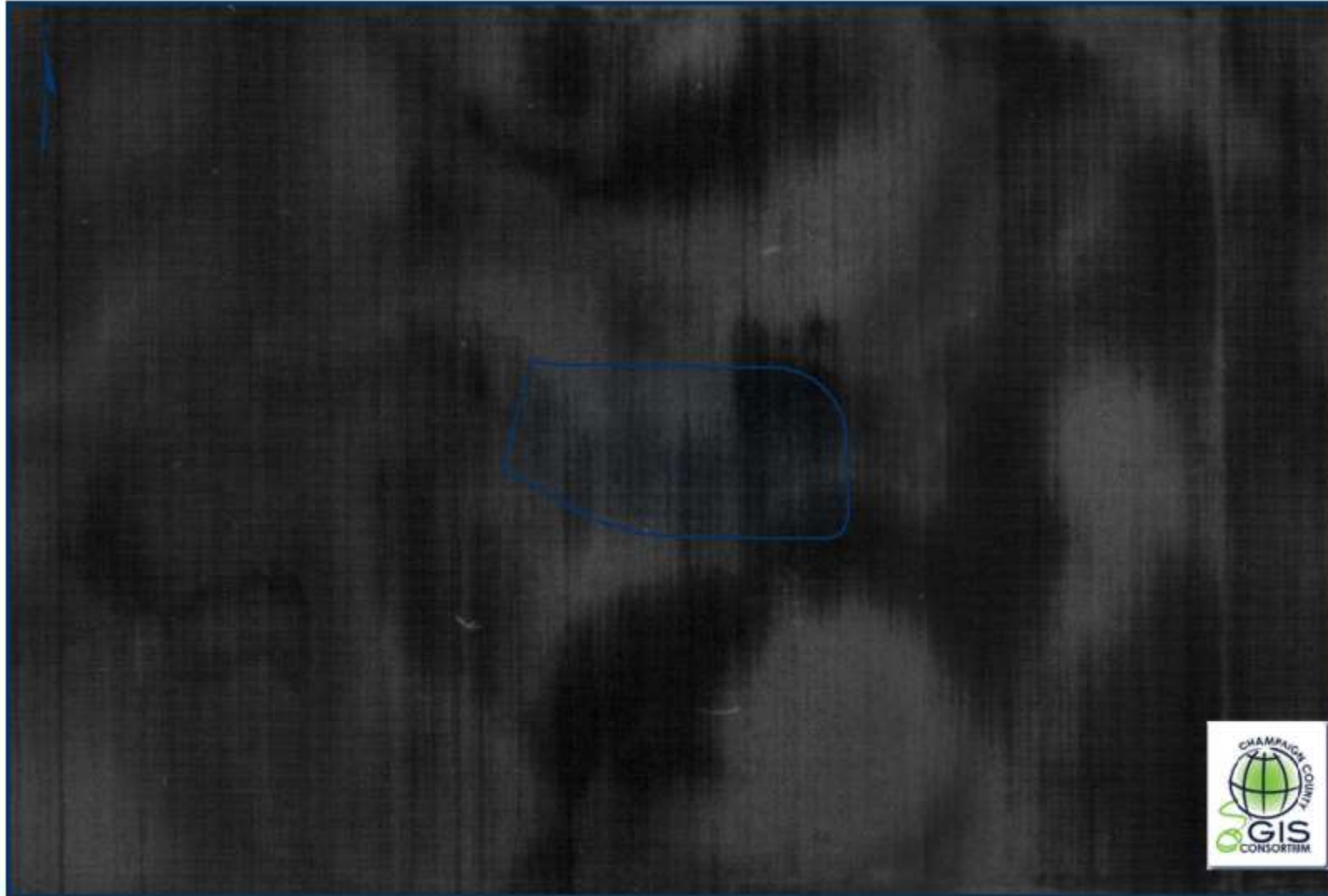
This map application was prepared with geographic information system (GIS) data created by the Champaign County GIS Consortium (CCGIS), or other CCGISC member agency. These entities do not warrant or guarantee the accuracy or suitability of GIS data for any purpose. The GIS data within this application is intended to be used as a general index to spatial information and not intended for detailed, site-specific analysis or resolution of legal matters. Users assume all risk arising from the use or misuse of this application and information contained herein. The use of this application constitutes acknowledgement of this disclaimer.



Donated By
Josef Hallbeck

Millage Park

Millage Park 1973



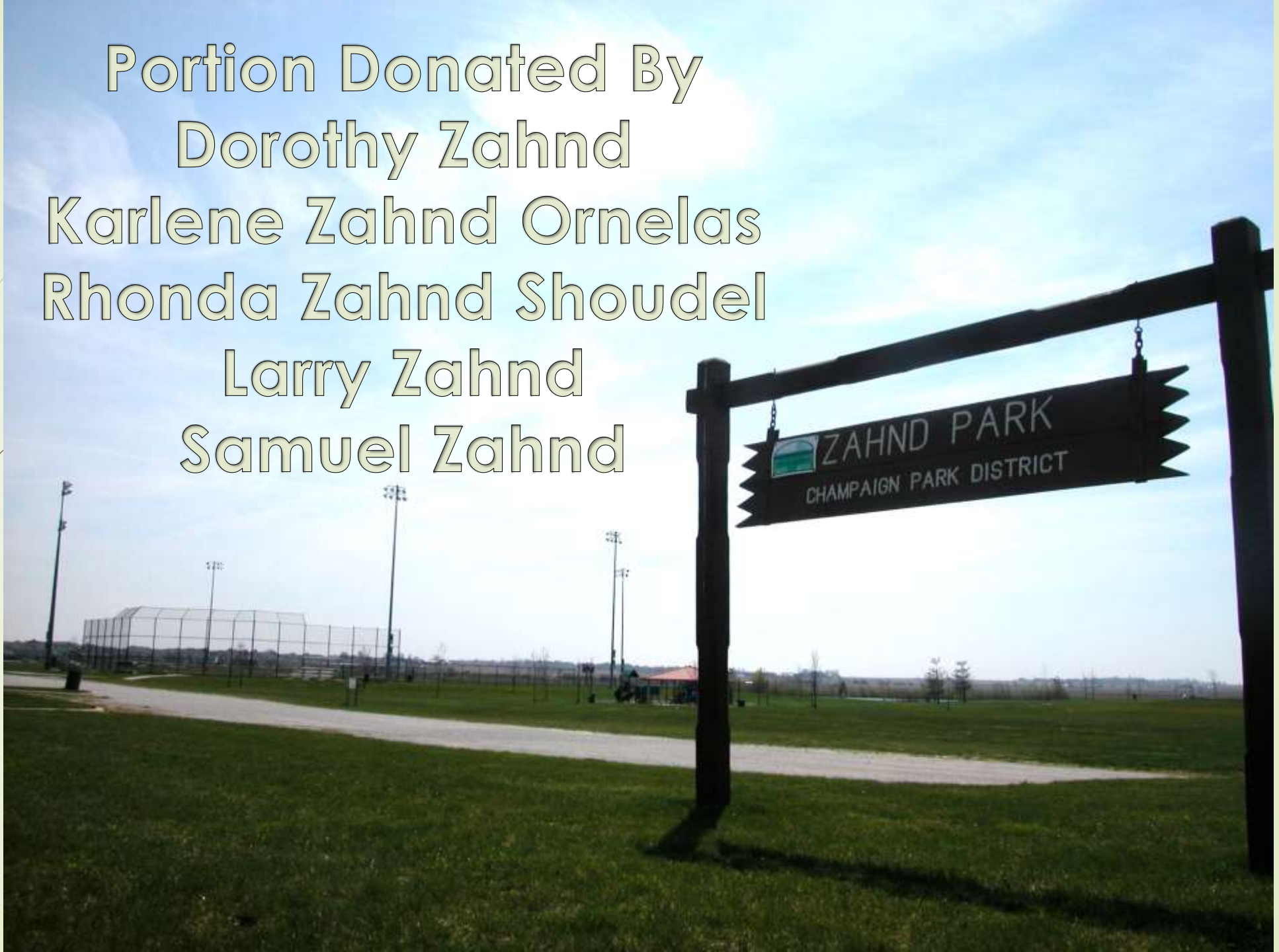
This map application was prepared with geographic information system (GIS) data created by the Champaign County GIS Consortium (CCGIS), or other CCGIS member agency. These entities do not warrant or guarantee the accuracy or suitability of GIS data for any purpose. The GIS data within this application is intended to be used as a general index to spatial information and not intended for detailed, site-specific analysis or resolution of legal matters. Users assume all risk arising from the use or misuse of this application and information contained herein. The use of this application constitutes acknowledgement of this disclaimer.

Millage Park-2014



This map application was prepared with geographic information system (GIS) data created by the Champaign County GIS Consortium (CCGIS), or other CCGIS member agency. These entities do not warrant or guarantee the accuracy or suitability of GIS data for any purpose. The GIS data within this application is intended to be used as a general index to spatial information and not intended for detailed, site-specific analysis or resolution of legal matters. Users assume all risk arising from the use or misuse of this application and information contained herein. The use of this application constitutes acknowledgement of this disclaimer.

Portion Donated By
Dorothy Zahnd
Karlene Zahnd Ornelas
Rhonda Zahnd Shoudel
Larry Zahnd
Samuel Zahnd



Zahnd Park 1973



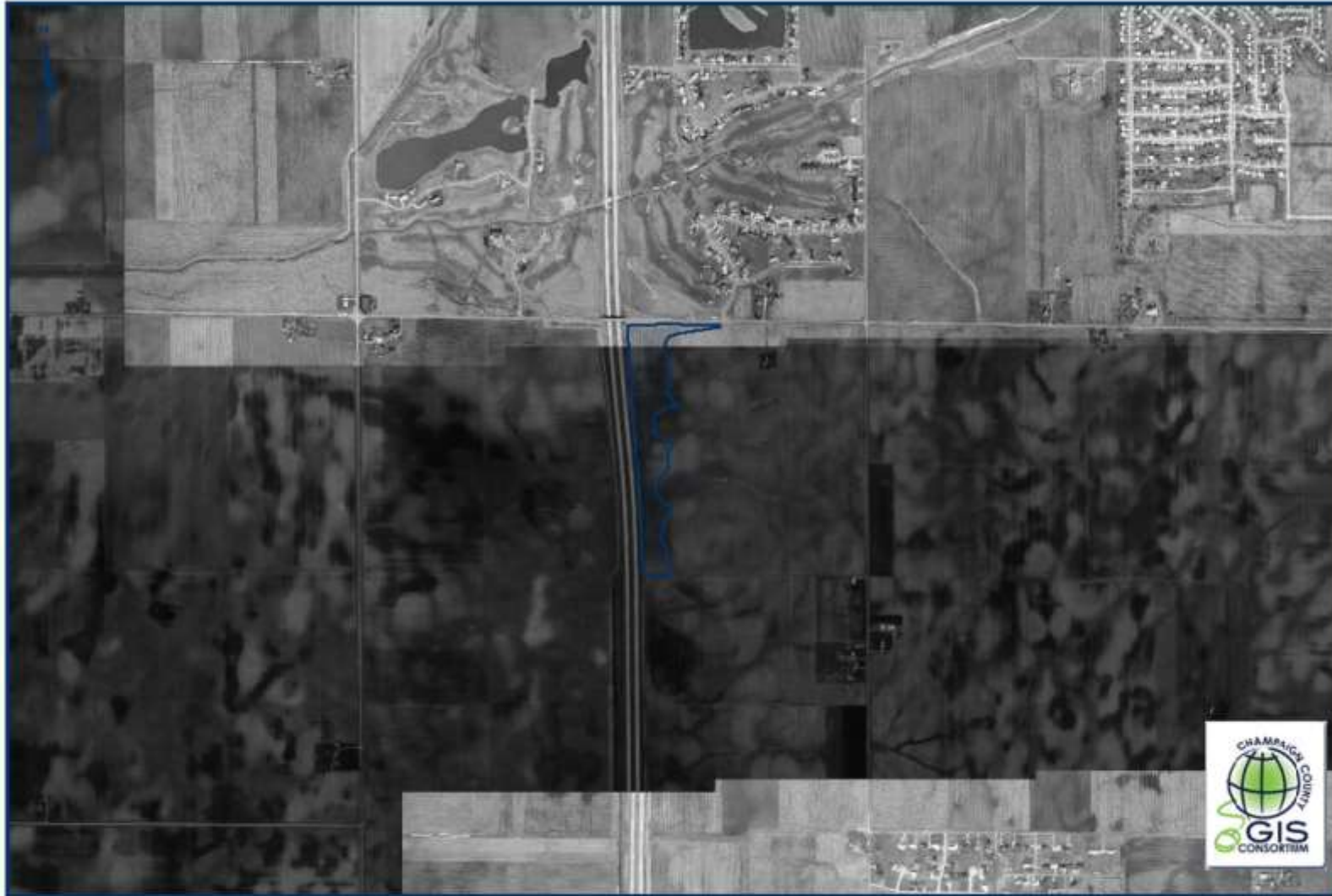
This map application was prepared with geographic information system (GIS) data created by the Champaign County GIS Consortium (CCGIS), or other CCGIS member agency. These entities do not warrant or guarantee the accuracy or suitability of GIS data for any purpose. The GIS data within this application is intended to be used as a general index to spatial information and not intended for detailed, site-specific analysis or resolution of legal matters. Users assume all risk arising from the use or misuse of this application and information contained herein. The use of this application constitutes acknowledgement of this disclaimer.

Zahnd Park-2014



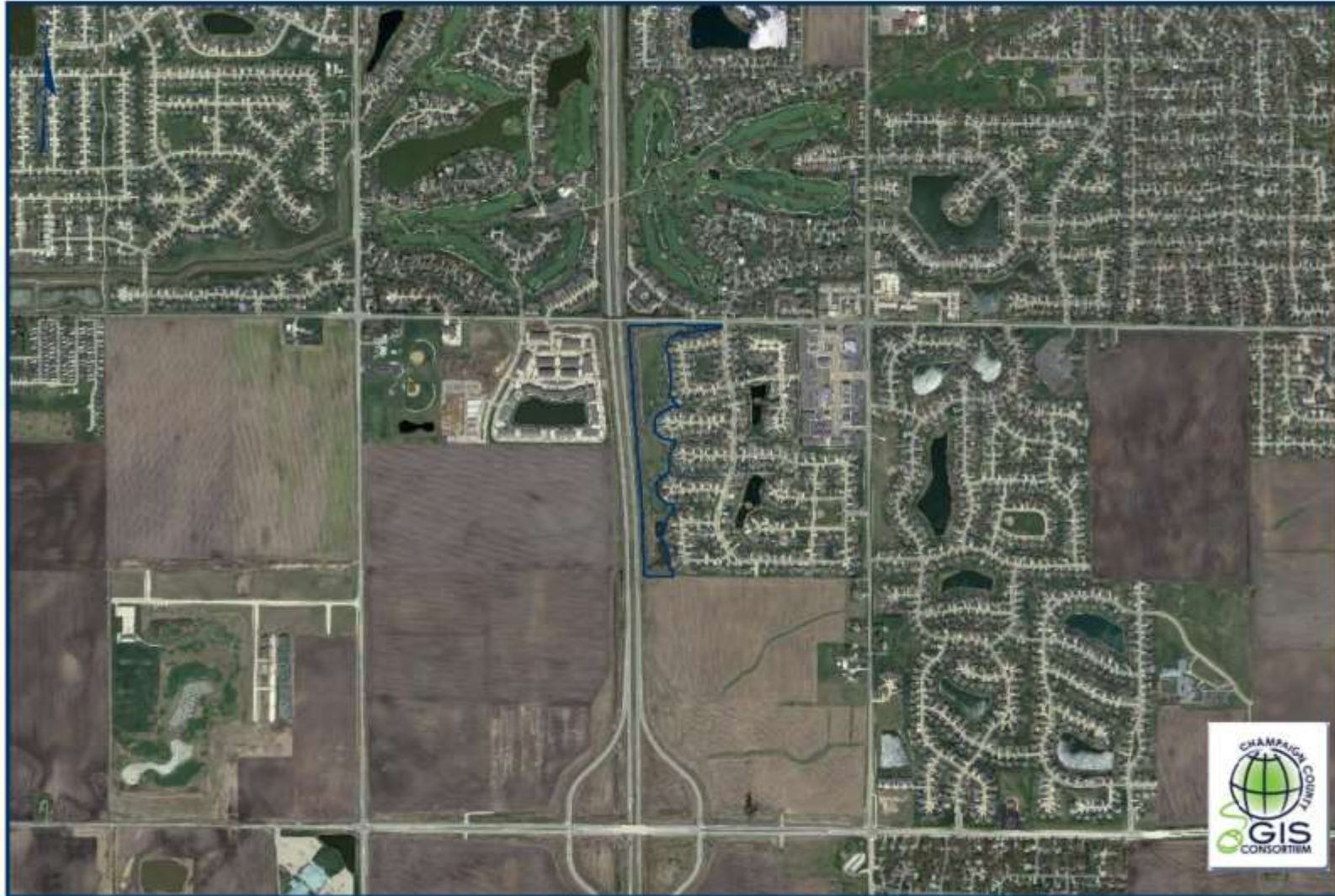
This map application was prepared with geographic information system (GIS) data created by the Champaign County GIS Consortium (CCGIS), or other CCGISC member agency. These entities do not warrant or guarantee the accuracy or suitability of GIS data for any purpose. The GIS data within this application is intended to be used as a general index to spatial information and not intended for detailed, site-specific analysis or resolution of legal matters. Users assume all risk arising from the use or misuse of this application and information contained herein. The use of this application constitutes acknowledgement of this disclaimer.

Robeson Meadows West Detention Area 1973



This map application was prepared with geographic information system (GIS) data created by the Champaign County GIS Consortium (COGISC), or other COGISC member agency. These entities do not warrant or guarantee the accuracy or suitability of GIS data for any purpose. The GIS data within this application is intended to be used as a general index to spatial information and not intended for detailed, site-specific analysis or resolution of legal matters. Users assume all risk arising from the use or misuse of this application and information contained herein. The use of this application constitutes acknowledgement of this disclaimer.

Robeson Meadows West Detention Area 2011



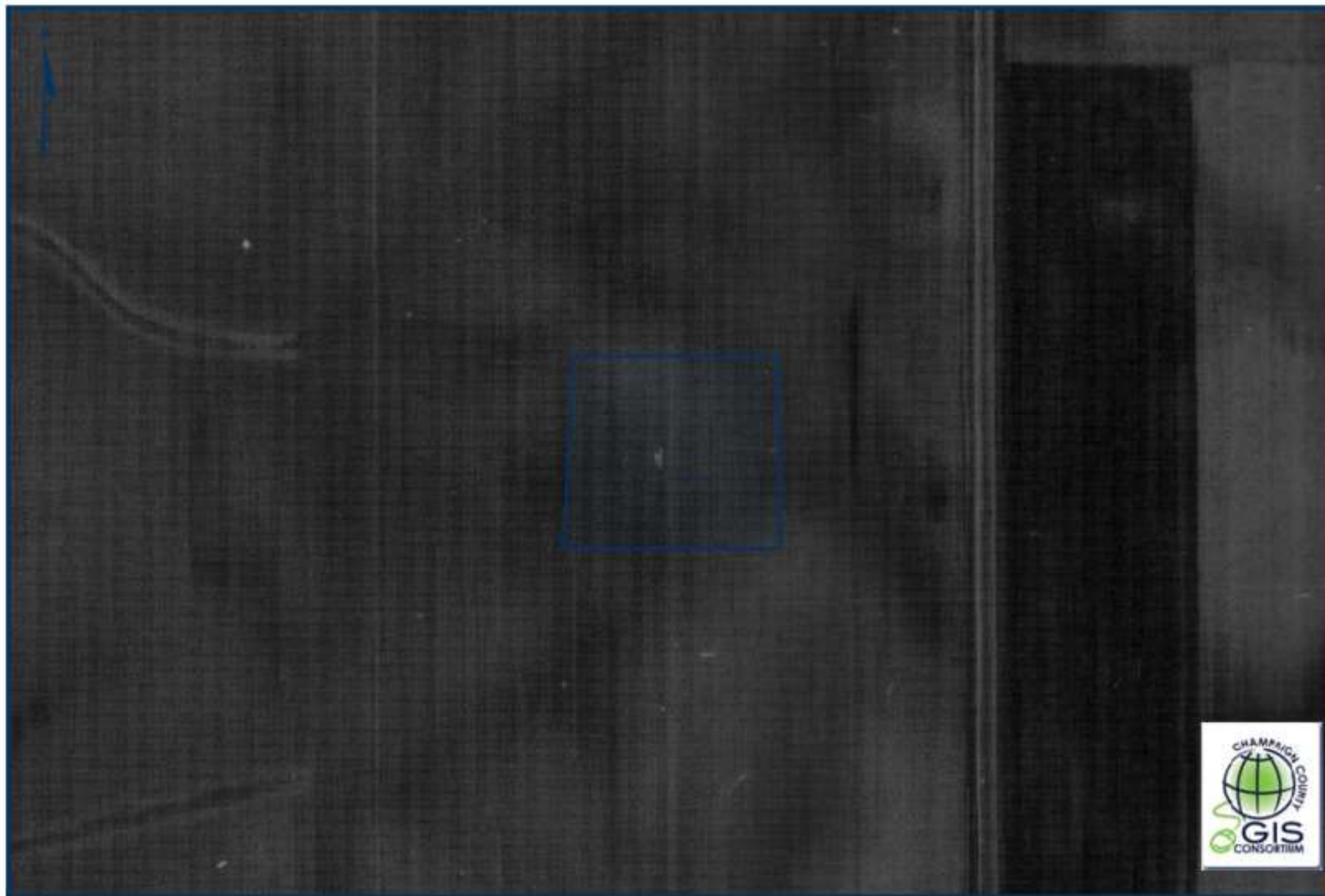
This map application was prepared with geographic information system (GIS) data created by the Champaign County GIS Consortium (COGISC), or other COGISC member agency. These entities do not warrant or guarantee the accuracy or suitability of GIS data for any purpose. The GIS data within this application is intended to be used as a general index to spatial information and not intended for detailed, site-specific analysis or resolution of legal matters. Users assume all risk arising from the use or misuse of this application and information contained herein. The use of this application constitutes acknowledgement of this disclaimer.

Robeson Meadows West Park



Donated By
Robeson Crossing, Inc.

Robeson Meadows West 1973



This map application was prepared with geographic information system (GIS) data created by the Champaign County GIS Consortium (CCGIS), or other CCGISC member agency. These entities do not warrant or guarantee the accuracy or suitability of GIS data for any purpose. The GIS data within this application is intended to be used as a general index to spatial information and not intended for detailed, site-specific analysis or resolution of legal matters. Users assume all risk arising from the use or misuse of this application and information contained herein. The use of this application constitutes acknowledgement of this disclaimer.

Robeson Meadows West Park-2014



This map application was prepared with geographic information system (GIS) data created by the Champaign County GIS Consortium (CCGIS), or other CCGISC member agency. These entities do not warrant or guarantee the accuracy or suitability of GIS data for any purpose. The GIS data within this application is intended to be used as a general index to spatial information and not intended for detailed, site-specific analysis or resolution of legal matters. Users assume all risk arising from the use or misuse of this application and information contained herein. The use of this application constitutes acknowledgement of this disclaimer.



Donated By
BankIllinois Trust Co.
Thomas Kauffmann
Pat Fitzgerald

Town Center Park-2014



This map application was prepared with geographic information system (GIS) data created by the Champaign County GIS Consortium (CCGISC), or other CCGISC member agency. These entities do not warrant or guarantee the accuracy or suitability of GIS data for any purpose. The GIS data within this application is intended to be used as a general index to spatial information and not intended for detailed, site-specific analysis or resolution of legal matters. Users assume all risk arising from the use or misuse of this application and information contained herein. The use of this application constitutes acknowledgement of this disclaimer.



BANNON MINI PARK
CHAMPAIGN
PARK DISTRICT

Donated By
City of Champaign

Bannon Mini Park-1973



This map application was prepared with geographic information system (GIS) data created by the Champaign County GIS Consortium (CCGIS), or other CCGIS member agency. These entities do not warrant or guarantee the accuracy or suitability of GIS data for any purpose. The GIS data within this application is intended to be used as a general index to spatial information and not intended for detailed, site-specific analysis or resolution of legal matters. Users assume all risk arising from the use or misuse of this application and information contained herein. The use of this application constitutes acknowledgement of this disclaimer.

Bannon Mini Park-2014

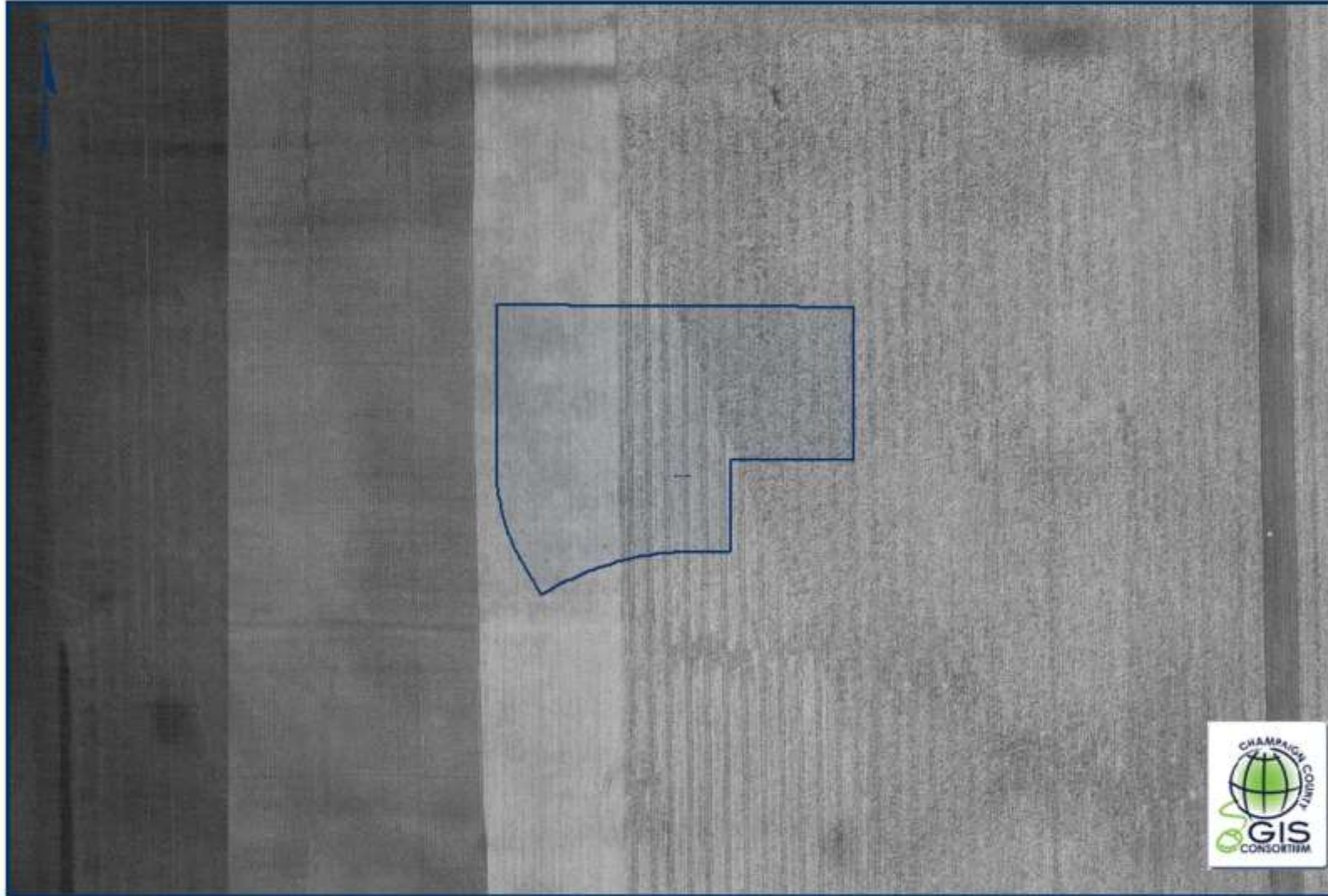


This map application was prepared with geographic information system (GIS) data created by the Champaign County GIS Consortium (CCGIS), or other CCGIS member agency. These entities do not warrant or guarantee the accuracy or suitability of GIS data for any purpose. The GIS data within this application is intended to be used as a general index to spatial information and not intended for detailed, site-specific analysis or resolution of legal matters. Users assume all risk arising from the use or misuse of this application and information contained herein. The use of this application constitutes acknowledgement of this disclaimer.



Portion Donated By
Ironwood Homes, Inc.

Mullikin Park 1973



This map application was prepared with geographic information system (GIS) data created by the Champaign County GIS Consortium (CCGIS), or other CCGIS member agency. These entities do not warrant or guarantee the accuracy or suitability of GIS data for any purpose. The GIS data within this application is intended to be used as a general index to spatial information and not intended for detailed, site-specific analysis or resolution of legal matters. Users assume all risk arising from the use or misuse of this application and information contained herein. The use of this application constitutes acknowledgement of this disclaimer.

Mullikin Park-2014

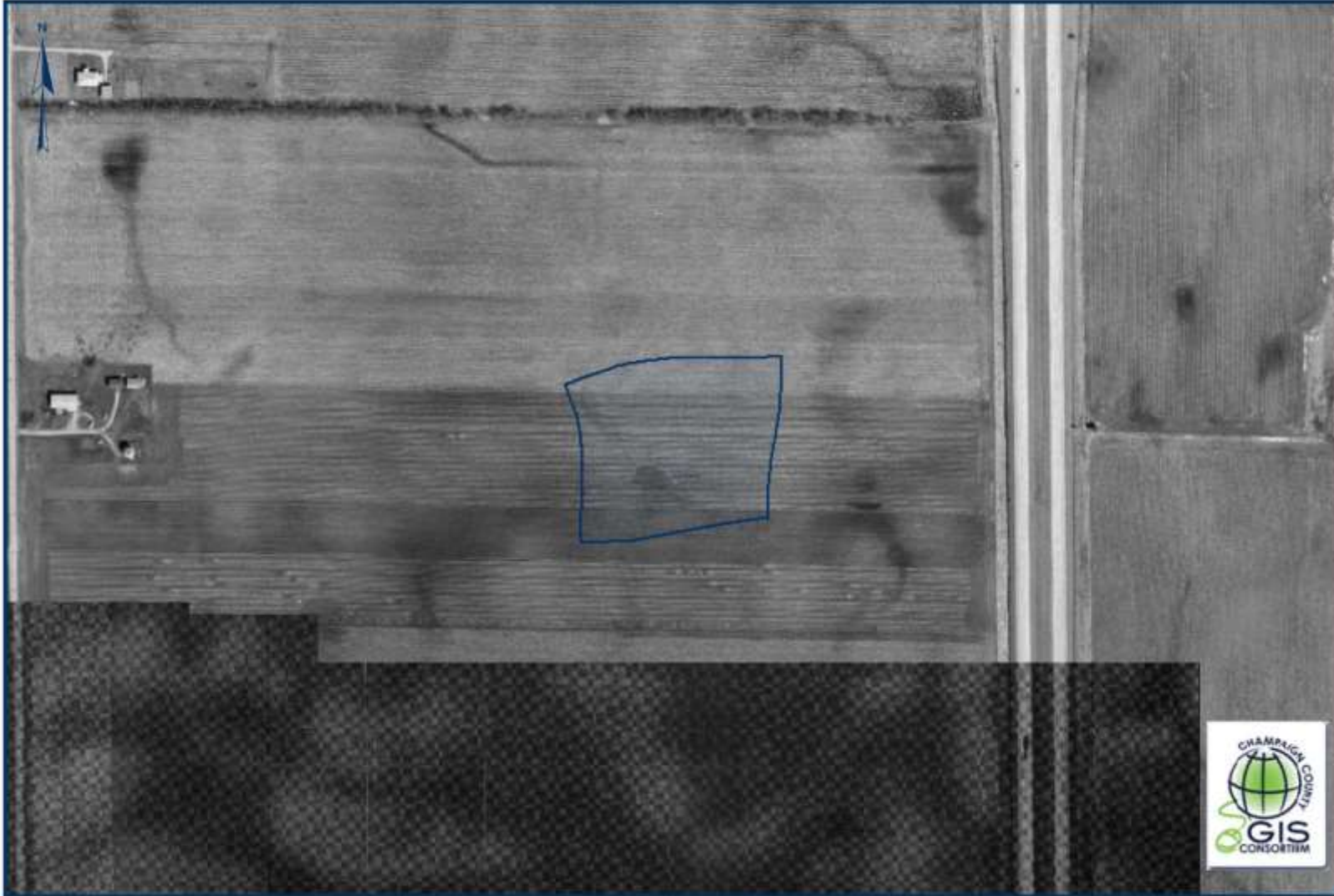


This map application was prepared with geographic information system (GIS) data created by the Champaign County GIS Consortium (CCGIS), or other CCGIS member agency. These entities do not warrant or guarantee the accuracy or suitability of GIS data for any purpose. The GIS data within this application is intended to be used as a general index to spatial information and not intended for detailed, site-specific analysis or resolution of legal matters. Users assume all risk arising from the use or misuse of this application and information contained herein. The use of this application constitutes acknowledgement of this disclaimer.



Donated By
Jerry Ramshaw

Turnberry Ridge Park 1973



This map application was prepared with geographic information system (GIS) data created by the Champaign County GIS Consortium (CCGIS), or other CCGIS member agency. These entities do not warrant or guarantee the accuracy or suitability of GIS data for any purpose. The GIS data within this application is intended to be used as a general index to spatial information and not intended for detailed, site-specific analysis or resolution of legal matters. Users assume all risk arising from the use or misuse of this application and information contained herein. The use of this application constitutes acknowledgement of this disclaimer.

Turnberry Ridge Park-2014



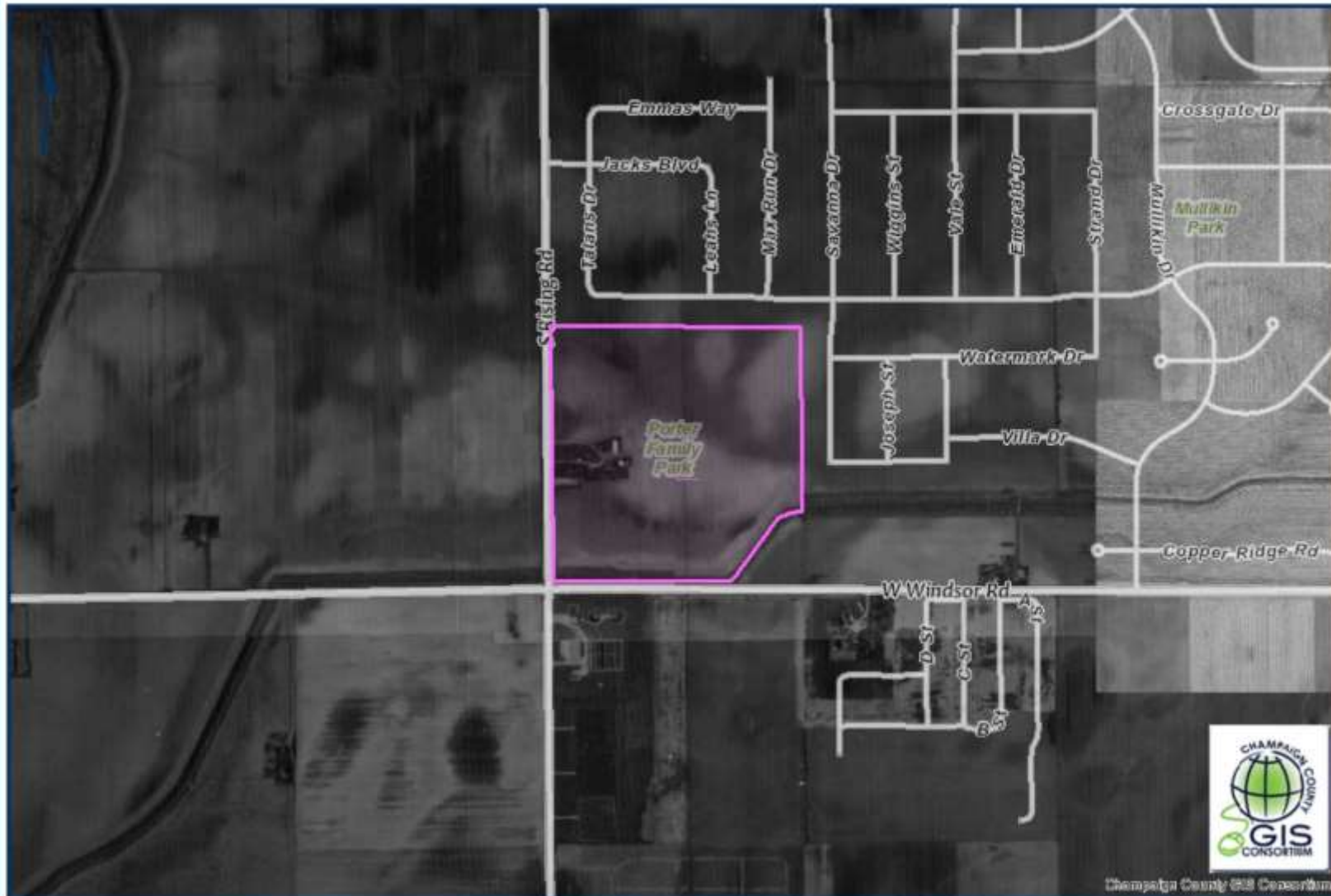
This map application was prepared with geographic information system (GIS) data created by the Champaign County GIS Consortium (CCGIS), or other CCGISC member agency. These entities do not warrant or guarantee the accuracy or suitability of GIS data for any purpose. The GIS data within this application is intended to be used as a general index to spatial information and not intended for detailed, site-specific analysis or resolution of legal matters. Users assume all risk arising from the use or misuse of this application and information contained herein. The use of this application constitutes acknowledgement of this disclaimer.



Robert C. Porter Family Park

Portion Donated By
Urbana-Champaign
Sanitary District

Robert C. Porter Family Park-1973



Champaign County GIS Consortium

This map application was prepared with geographic information system (GIS) data created by the Champaign County GIS Consortium (CCGISC), or other CCGISC member agency. These entities do not warrant or guarantee the accuracy or suitability of GIS data for any purpose. The GIS data within this application is intended to be used as a general index to spatial information and not intended for detailed, site-specific analysis or resolution of legal matters. Users assume all risk arising from the use or misuse of this application and information contained herein. The use of this application constitutes acknowledgement of this disclaimer.

Robert C. Porter Family Park-2014

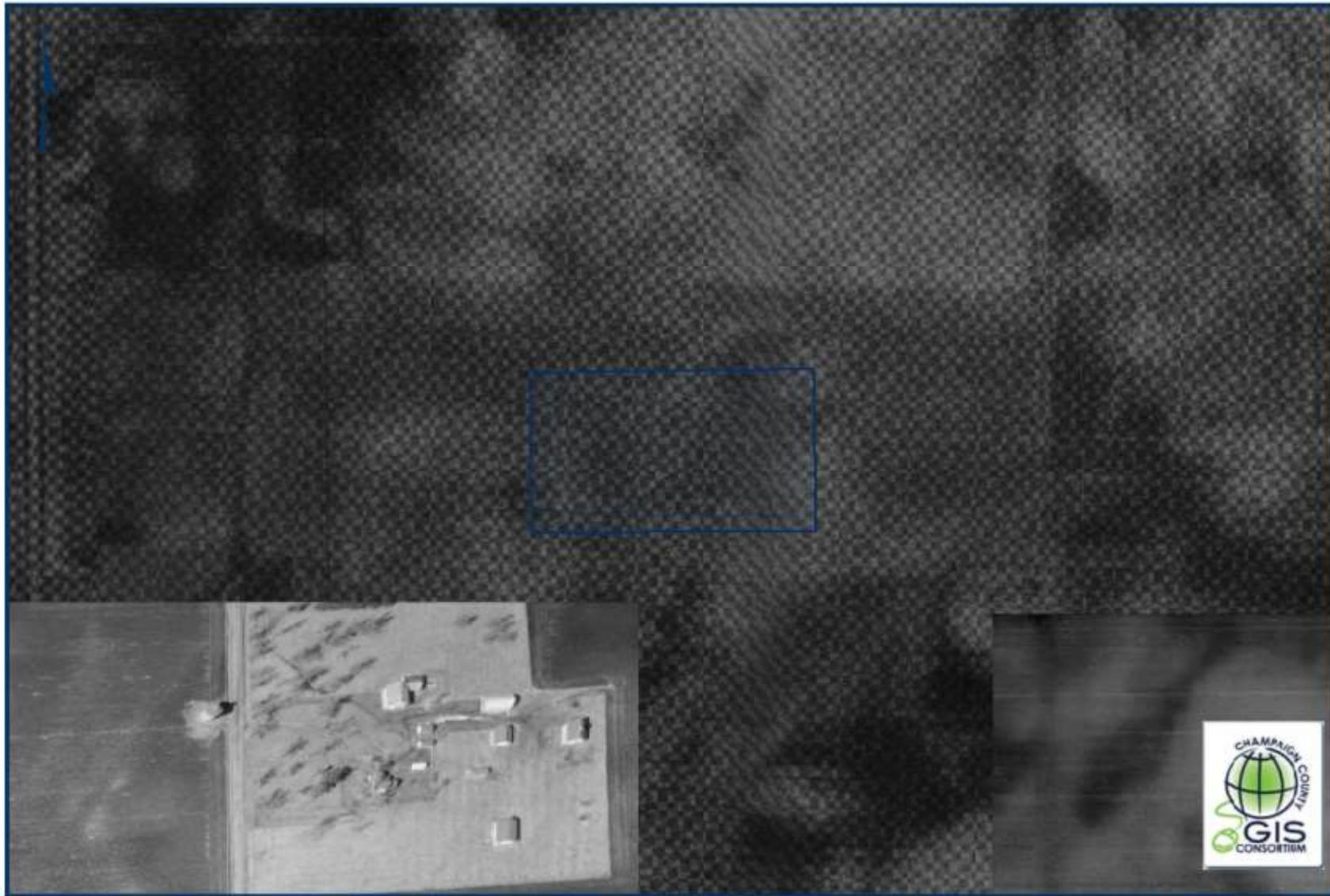


This map application was prepared with geographic information system (GIS) data created by the Champaign County GIS Consortium (CCGISC), or other CCGISC member agency. These entities do not warrant or guarantee the accuracy or suitability of GIS data for any purpose. The GIS data within this application is intended to be used as a general index to spatial information and not intended for detailed, site-specific analysis or resolution of legal matters. Users assume all risk arising from the use or misuse of this application and information contained herein. The use of this application constitutes acknowledgement of this disclaimer.



Donated By
The Atkins Group

Toalson Park 1973




This map application was prepared with geographic information system (GIS) data created by the Champaign County GIS Consortium (COGISC), or other COGISC member agency. These entities do not warrant or guarantee the accuracy or suitability of GIS data for any purpose. The GIS data within this application is intended to be used as a general index to spatial information and not intended for detailed, site-specific analysis or resolution of legal matters. Users assume all risk arising from the use or misuse of this application and information contained herein. The use of this application constitutes acknowledgement of this disclaimer.

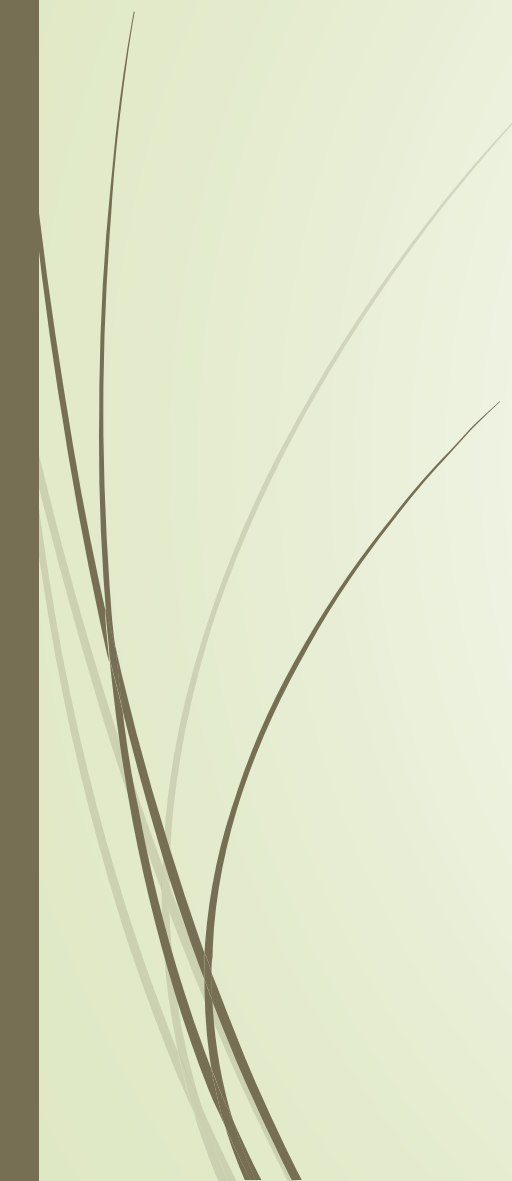
Toalson Park-2014



This map application was prepared with geographic information system (GIS) data created by the Champaign County GIS Consortium (CCGIS), or other CCGIS member agency. These entities do not warrant or guarantee the accuracy or suitability of GIS data for any purpose. The GIS data within this application is intended to be used as a general index to spatial information and not intended for detailed, site-specific analysis or resolution of legal matters. Users assume all risk arising from the use or misuse of this application and information contained herein. The use of this application constitutes acknowledgement of this disclaimer.



*Donations make a
difference in
everything we do!*



From monuments, structures and sculptures...



***Bilbrey Bandstand
West Side Park***

West Side Park



Tootsie



Double Dutch Jump for Joy

To renovations of historic facilities...



*Virginia Theatre
Auditorium*

Virginia Theatre



*Tootsie's Lobby
Made Possible by
a Gift from
Michael Carragher*



*Wurlitzer Organ Restoration
Made Possible by a Gift from
Mrs. T. Gaillard Knappenberger*



To making a difference in the life of a child....



*Donations are the foundation
that keeps us strong.*

**For more information on how you can help, contact
Laura Auteberry at (217) 819-3839 or
Laura.Auteberry@cparkdistrict.com**

